

Using Regional Data Resources for the Wasatch Front

Bert Granberg, Wasatch Front Regional Council

Mark Christensen, Saratoga Springs City

Tim Hereth, Mountainland Association of Governments

Utah League of Cities & Towns
Annual Convention 2024

WFRC and MAG are MPOs...what's that?

Utah's 4 Metropolitan Planning Organizations are regional transportation policy boards, that coordinate and adopt short and long range transportation investment plans – with input across key stakeholders – to best serve our communities.

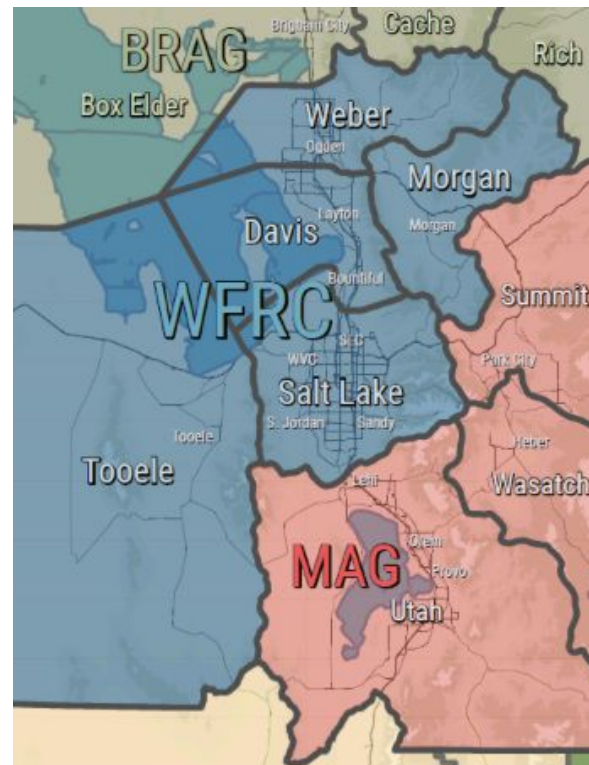
WFRC – Salt Lake - Ogden - Brigham City metro area

MAG – Provo - Orem metro area

Dixie MPO – St. George metro area

Cache MPO – Logan metro area

WFRC and MAG are also AOGs that also include Tooele and Wasatch Back counties



Regional Data

Why? Help decision makers and residents see our urban landscape

Travel model and forecast - roads, transit

Household and employment forecasts

Prioritization of future transportation projects

Scenario testing and regional performance metrics

Regional and local planning and policy support

WFRC/MAG depends on collaboration with local governments and UGRC

Each of the data and map resources is designed to support solutions

Regional Planning Partners



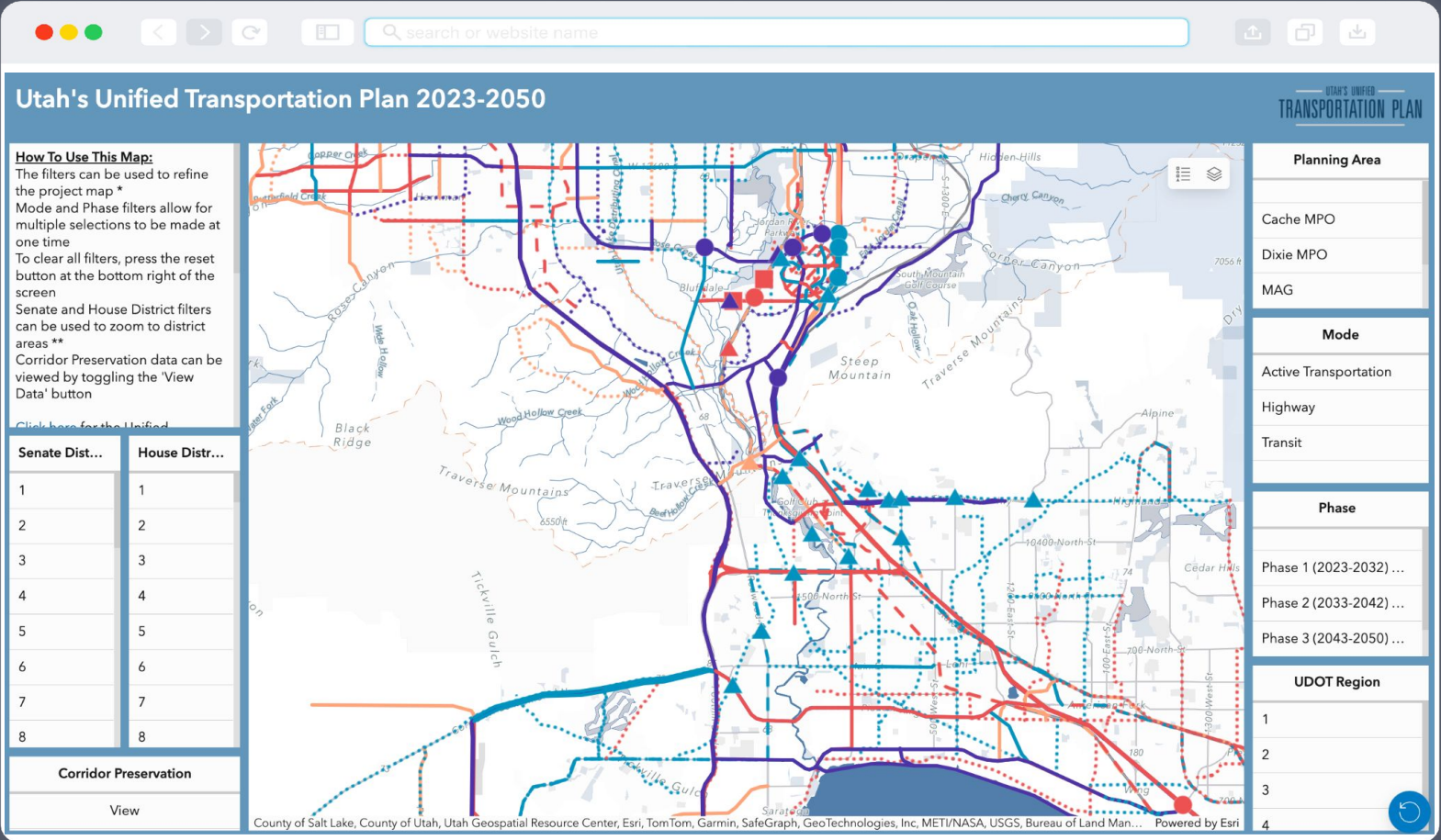
A Top Ten List

GIS Planning Resources

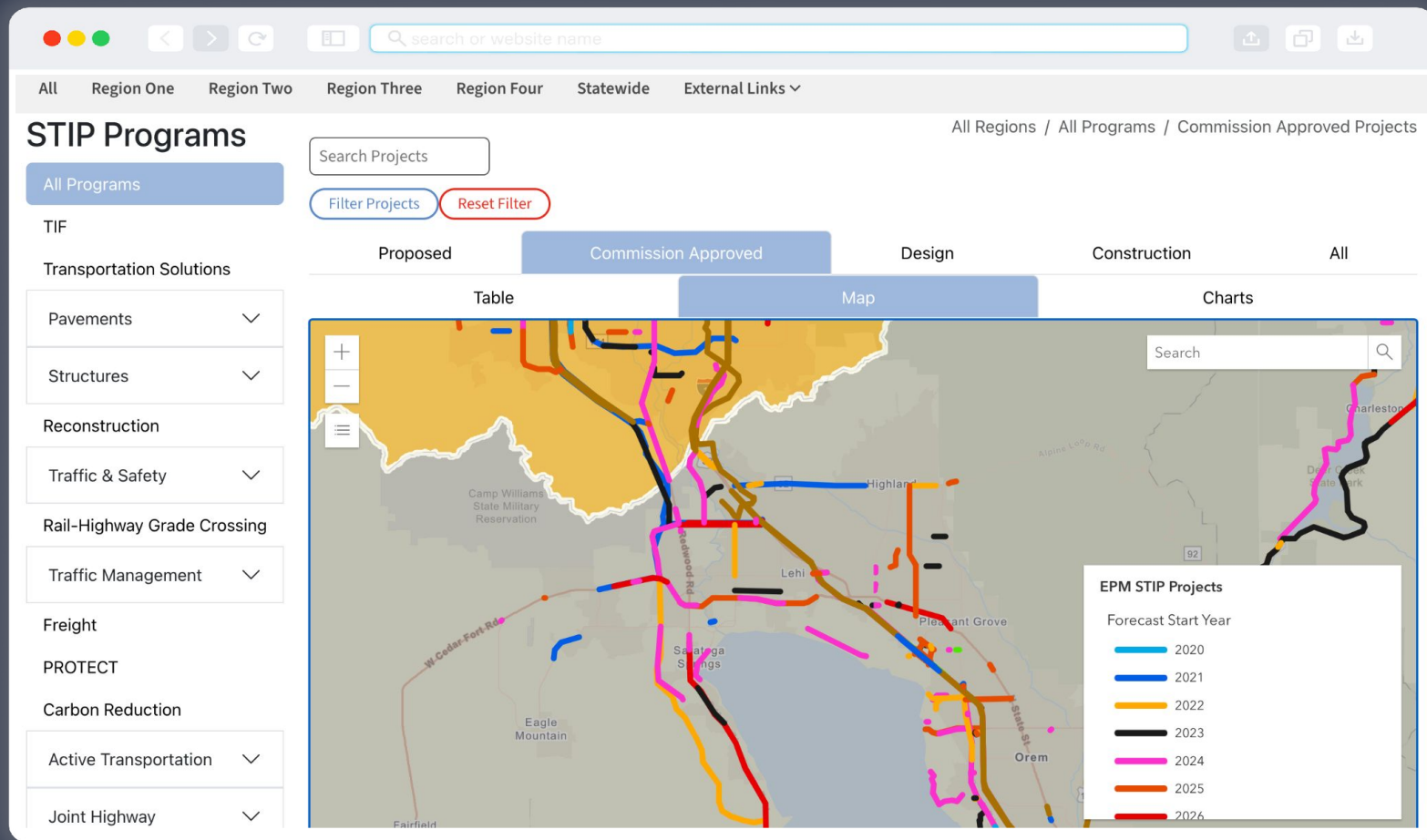
– in no particular order –

A large, dark blue, diagonal shape that starts from the bottom left and extends towards the top right, covering the lower half of the slide.

10. Unified Plan Transportation Projects (2023-50)



9. Transportation Improvement Programs (STIP) 2025-2030



8. Technical Planning Assistance – TLC, TAG Projects



The Wasatch Front Regional Council (WFRC) is pleased to announce the following projects that have been awarded assistance through the Transportation and Land Use Connection (TLC) program for 2023.

2023 Salt Lake Urbanized Area Awarded Projects

Salt Lake Urbanized Area	Project Name	Total (\$)	TLC (\$)	Match (\$)
Brighton	Neighborhood Nodes Design Plan	130,000	121,000	9,000
Cottonwood Heights	Town Center Master Plan and Canal Trail Study	249,740	233,000	16,740
Draper	River to Range Corridor - Draper City Connections	100,000	93,000	7,000
Holladay	General Plan Update and Data Visualization	190,000	165,000	25,000
Midvale	Transportation Master Plan	176,000	160,000	16,000
Millcreek	Master Trail and Sidewalk Implementation Plan	290,000	219,845	70,155
South Jordan	Shield's Lane Solutions Development Study	150,000	140,000	10,000
Salt Lake City	North Temple Economic Revitalization Plan	190,000	170,000	20,000
West Jordan	Safe Street Study and Implementation Plan	130,000	170,000	9,000
Total Funded		1,065,740	1,422,845	182,895

2023 Ogden-Layton Urbanized Area Awarded Projects

Ogden/Layton Area	Project Name	Total (\$)	TLC (\$)	Match (\$)
Davis County	Active Transportation Plan	250,000	225,000	25,000
Layton	Long Range Economic Development Plan	230,000	213,900	16,100
Perry	Highway 89 Master Plan	120,000	100,000	20,000
Total Funded		600,000	538,900	61,100

2023 RPO Area Awarded Projects

RPO Area	Project Name	Total (\$)	TLC (\$)	Match (\$)
Morgan City	Downtown Plan and Design Standards; Parks and Trails Plan	155,000	140,000	15,000
Total Funded		155,000	140,000	15,000

\$2,360,740 2023 Region-Wide TLC Funding
\$2,101,745 Total 2023 Region-Wide Funding
\$258,995 2023 Region-Wide Match

TAG - Technical Assistance to Governments Program

TAG Cycle III (Call for Projects now open)

MAG is now accepting pre-application project concept proposals. Please see links to the left for the '2024 TAG Program Guidelines' and '2024 TAG Project Concept Submittal Form'. Project concepts are due September 26, 2024. Final Application are due December 12, 2024.

TAG Cycle II Projects (previously awarded)

Awardee	Project
Alpine	Main Street and Gateways Small Area Plan
American Fork	FrontRunner Station Area Plan (Phase II) and General Plan Update
Oakley, Kamas, Francis, Summit County	SR 32 Corridor and City Centers Plan
Payson	Nebo Beltway Small Area Plan
Provo	Station Area Planning, Phase II
Saratoga Springs, Eagle Mountain, Fairfield, Cedar Fort	West Utah County Interagency Action Plan for Sustainable Growth
Vineyard	Southeast Vineyard Active Transportation Plan and Wayfinding Design Guidelines

TAG Cycle II Projects (previously awarded)

Awardee	Project
Coalville	Main Street Revitalization and Connectivity Plan
Lehi	Downtown Revitalization Plan Update and Historic State Street/100E Station Area Plan
Midway	Midway Safe and Affordable Mobility Plan
Park City	Bonanza Park Zoning Update
Payson	Downtown Gateway Plan
Spanish Fork	General Plan Update and FrontRunner Station Area Plan
Springville	North Main Street Gateway Small Area Plan

7. Multiuse Pathways and On-street Bike Facilities

The screenshot displays a web application interface for managing bike facilities. The main map shows Eagle Mountain, UT, with various bike facilities overlaid in different colors. A data table overlay is visible, showing details for 'Eagle Mountain Pkwy'.

Table: wfrc_bike_map_features_gdb: Eagle Mountain Pkwy

Name	Eagle Mountain Pkwy
Primary Type	Trail or Pathway
Primary Side	West Side
Secondary Type	Trail or Pathway
Secondary Side	East Side
City	Eagle Mountain
County	UTAH
Notes	
Length (meters)	6,321.02
Road Cartocode	3 - Paved Shared Use
Source	Trails Pathways

Mobile App Preview: Utah Bikeways Map

The mobile app interface shows a map of a city grid with various bike facilities. A red arrow points from the 'Route Types' legend in the mobile app to the 'Traffic Stress' legend in the web application.

Traffic Stress Legend:

- Most Comfortable (Green)
- Comfortable (Light Green)
- Less Comfortable (Yellow)
- Higher Traffic (Orange)
- Traffic Lights (Red)

Route Types Legend:

- Paved Path (Green)
- Protected Bike Lane (Blue)
- Bike Lane (Orange)
- Marked Route (Red)
- Unmarked Route (Pink)

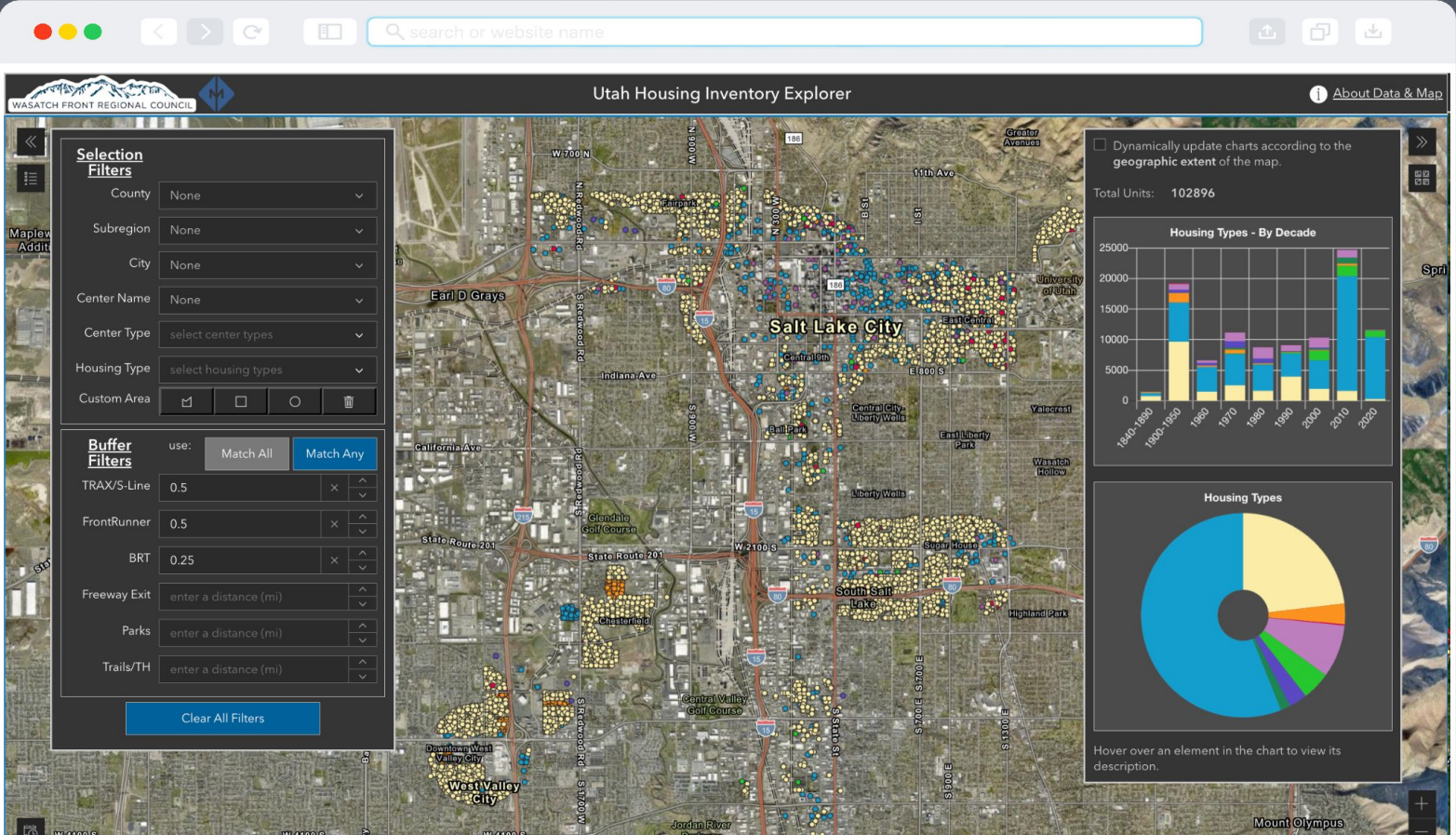
Text Overlay:

forthcoming project...

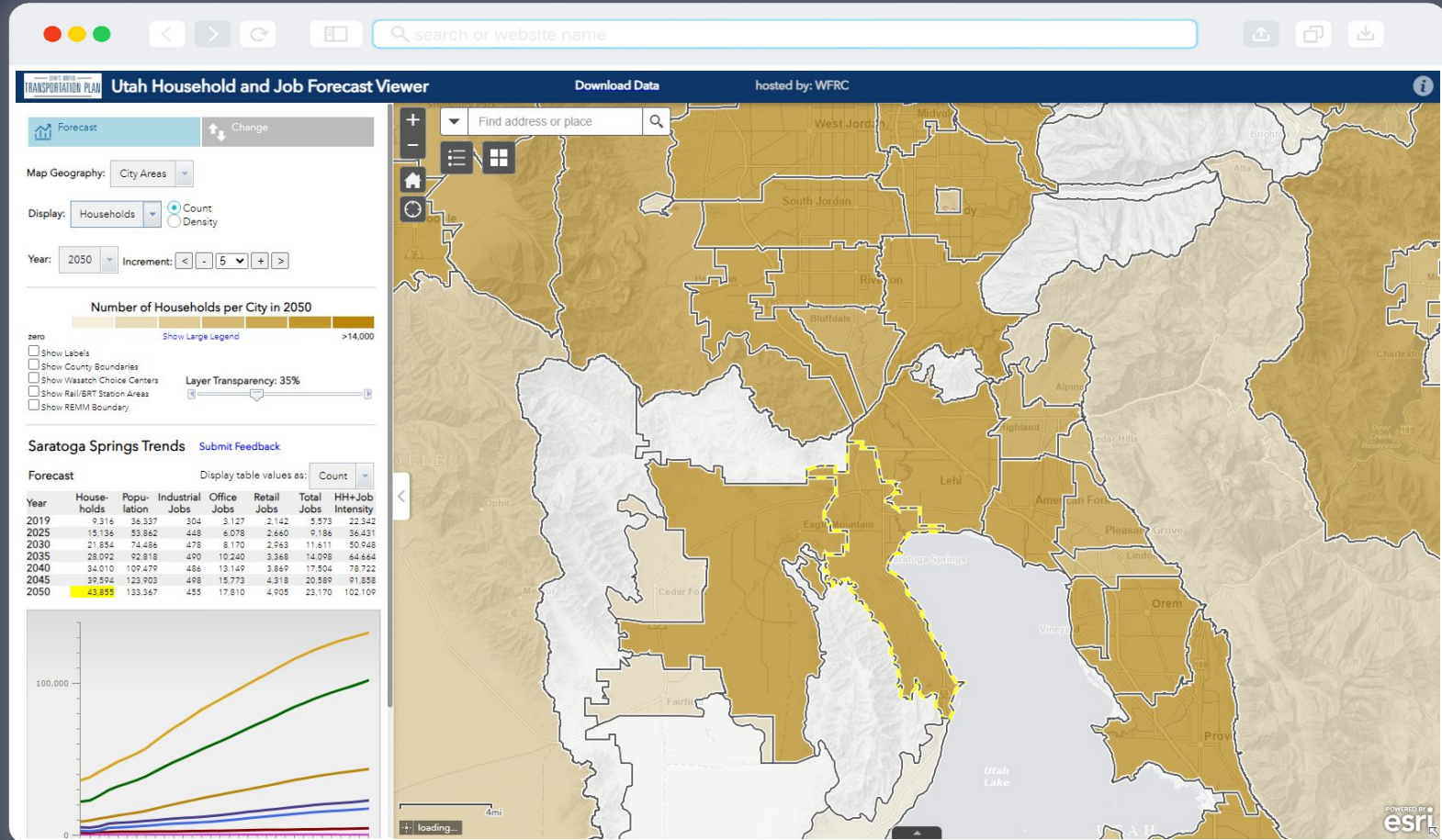
Wasatch Front or Statewide Bikeways Mobile-centric web map

(with 'suggest edits' capability)

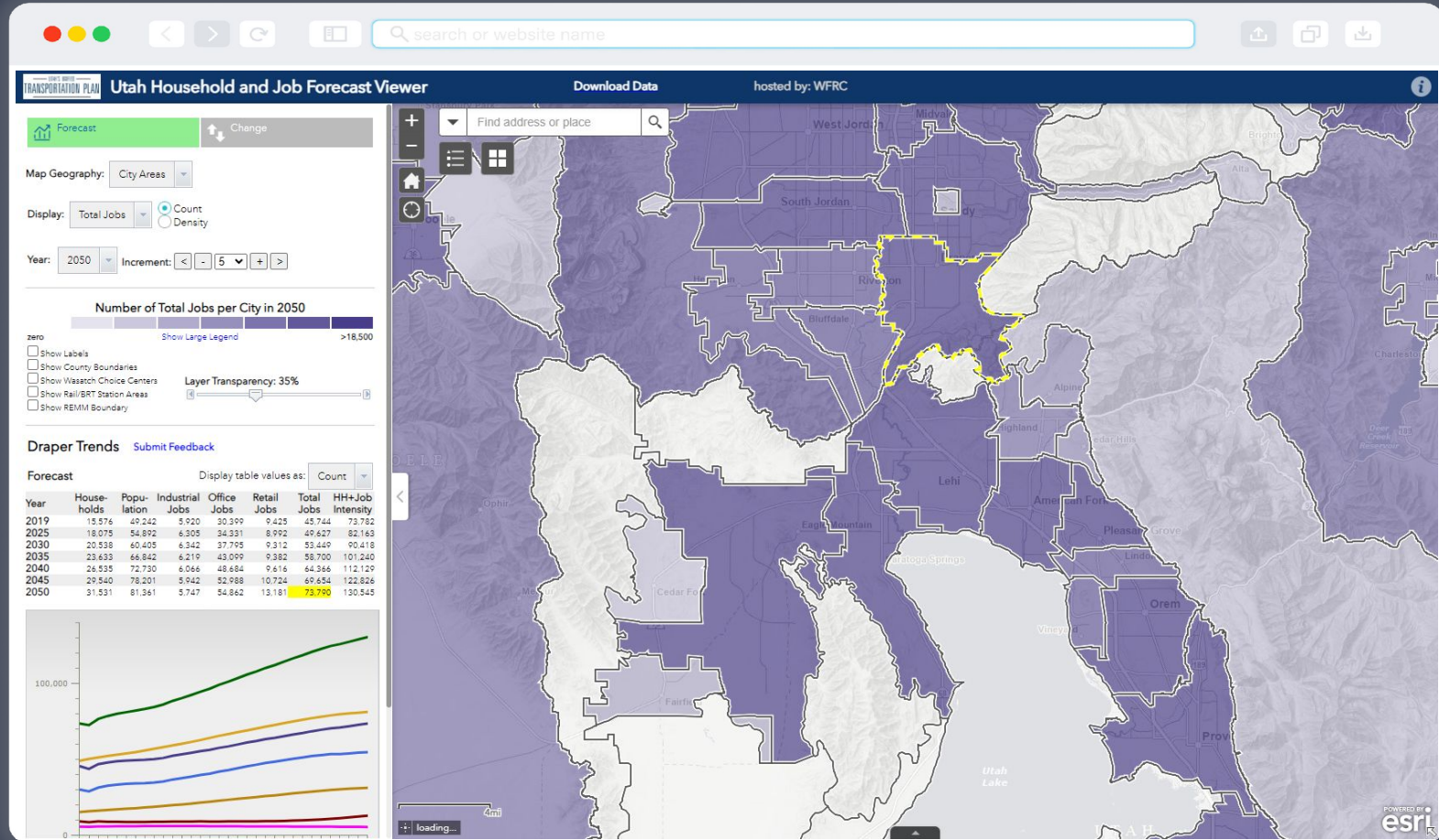
6. Housing Unit Inventory



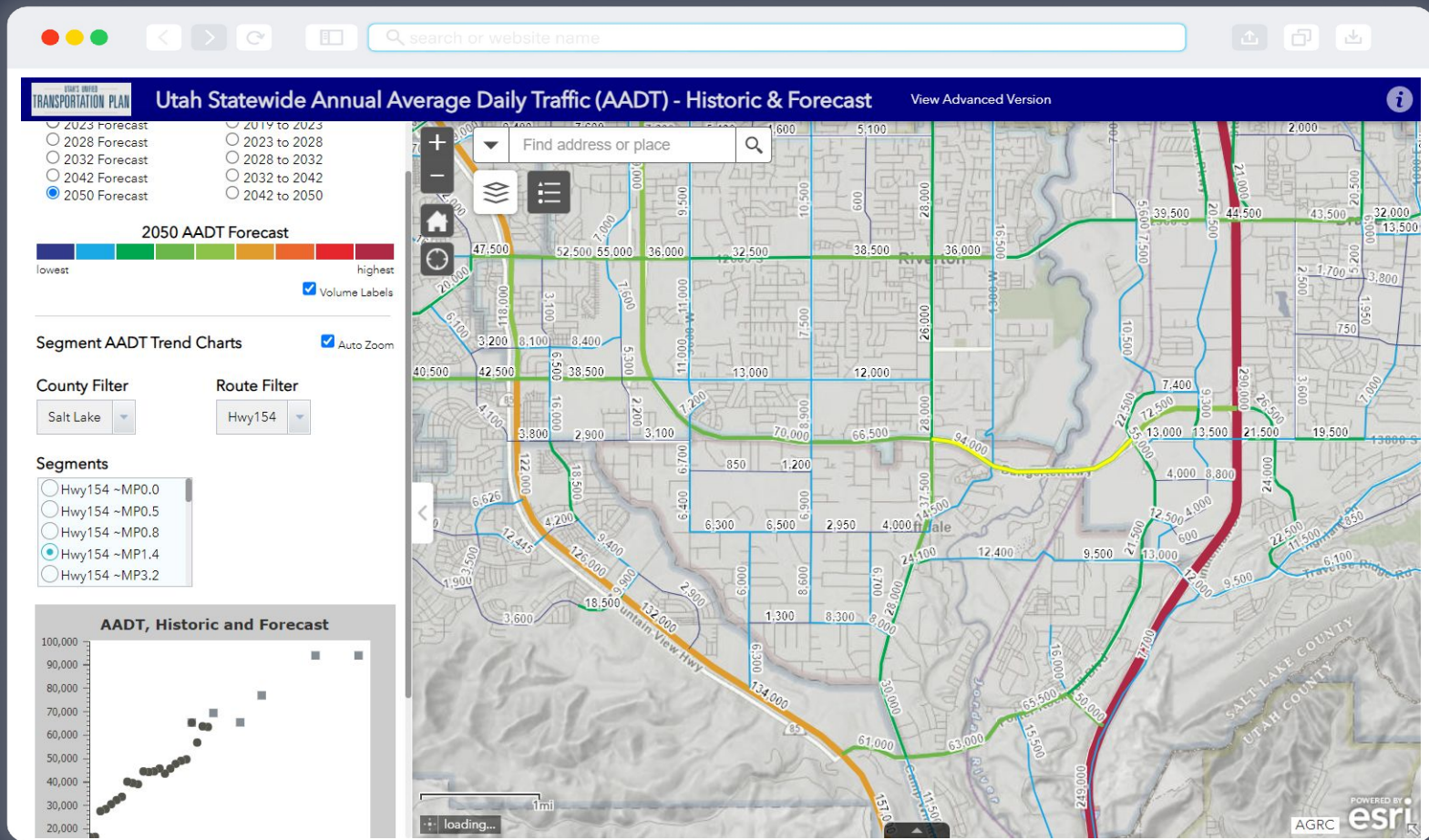
5a. Household Annual Forecast (2019-50) – Unified Plan



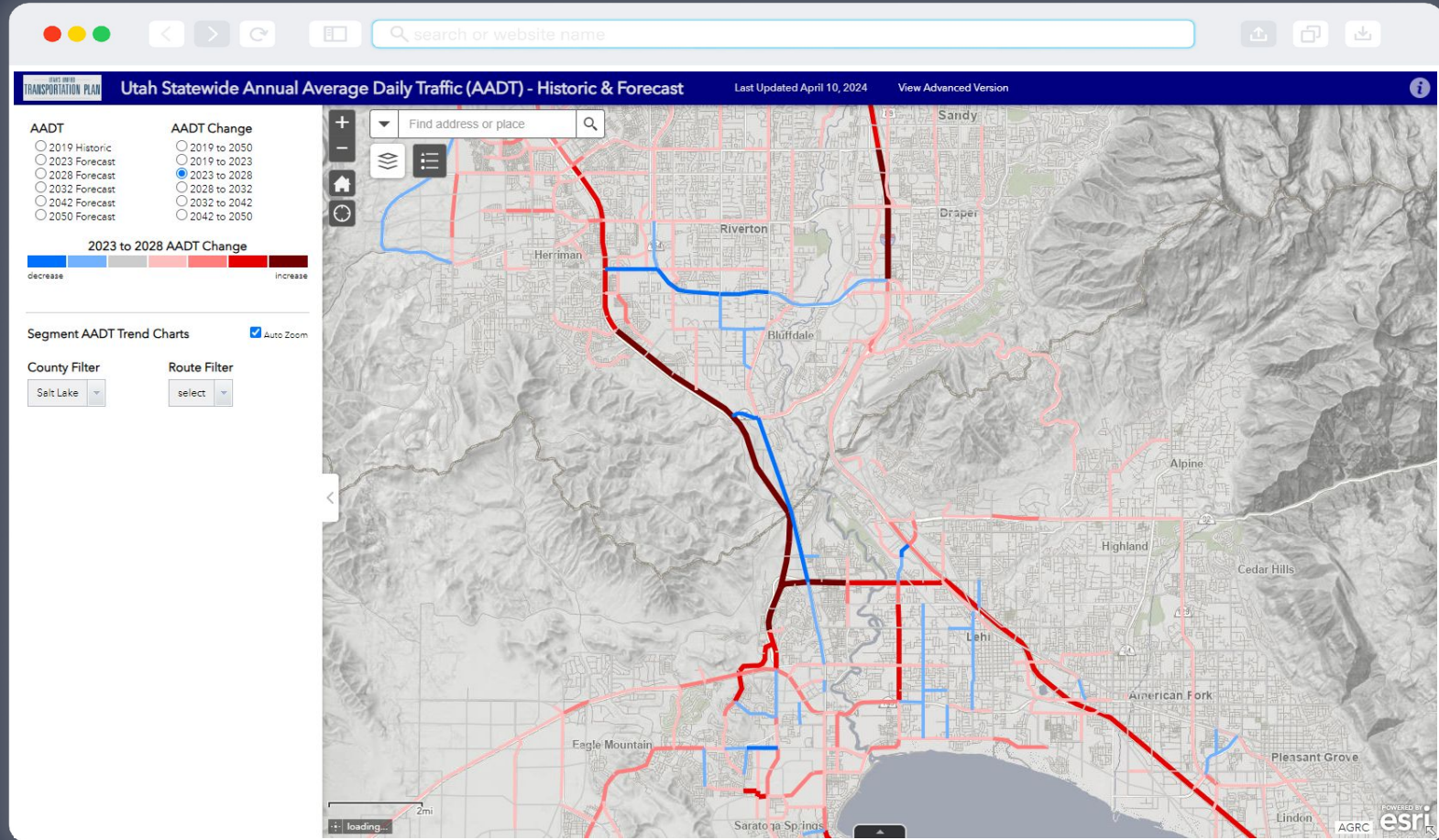
5b. Job Annual Forecast (2019-50) – Unified Plan



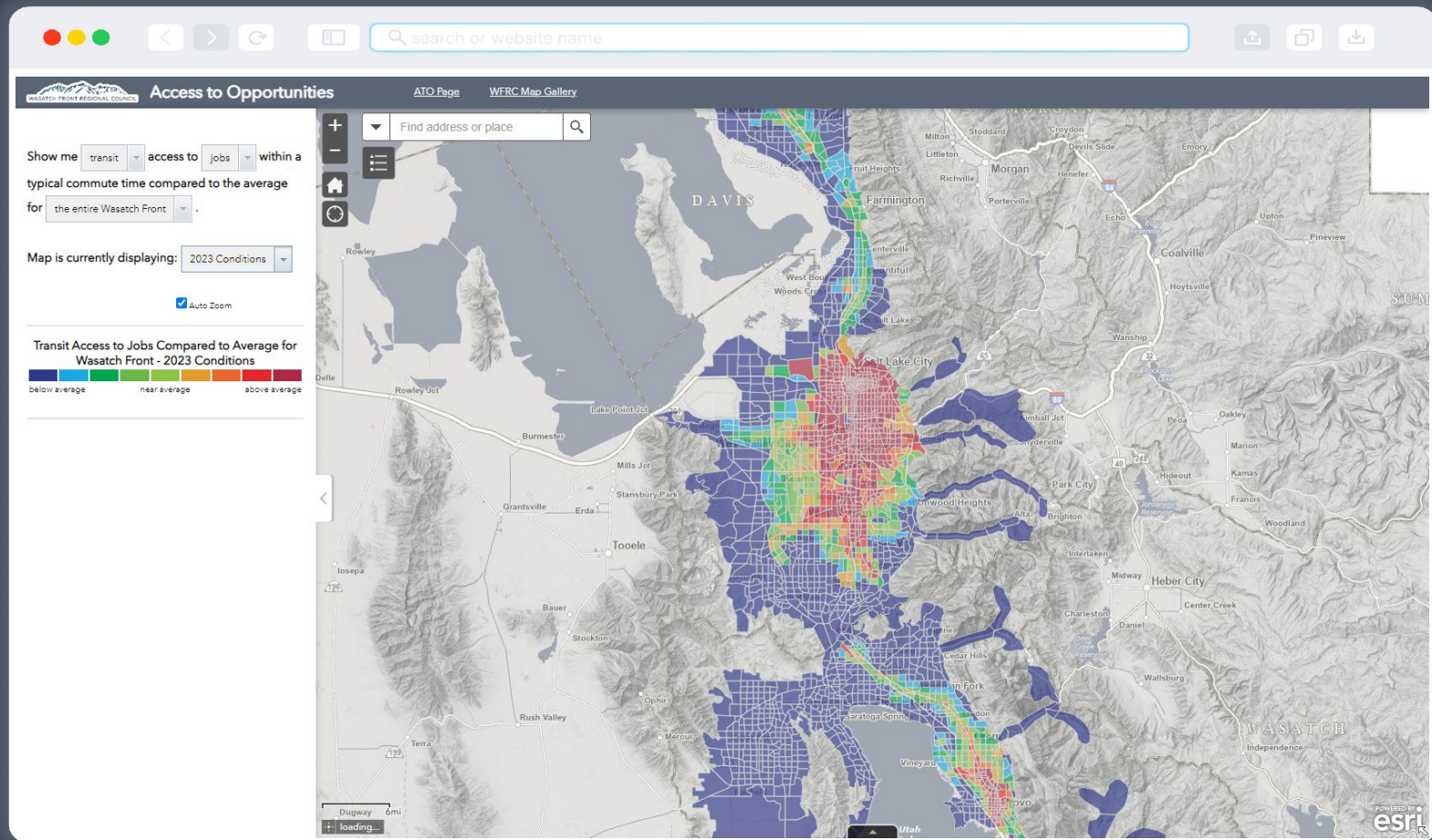
4. Traffic Volume Forecast Map - Unified Plan



4. Traffic Volume Forecast Map - Unified Plan

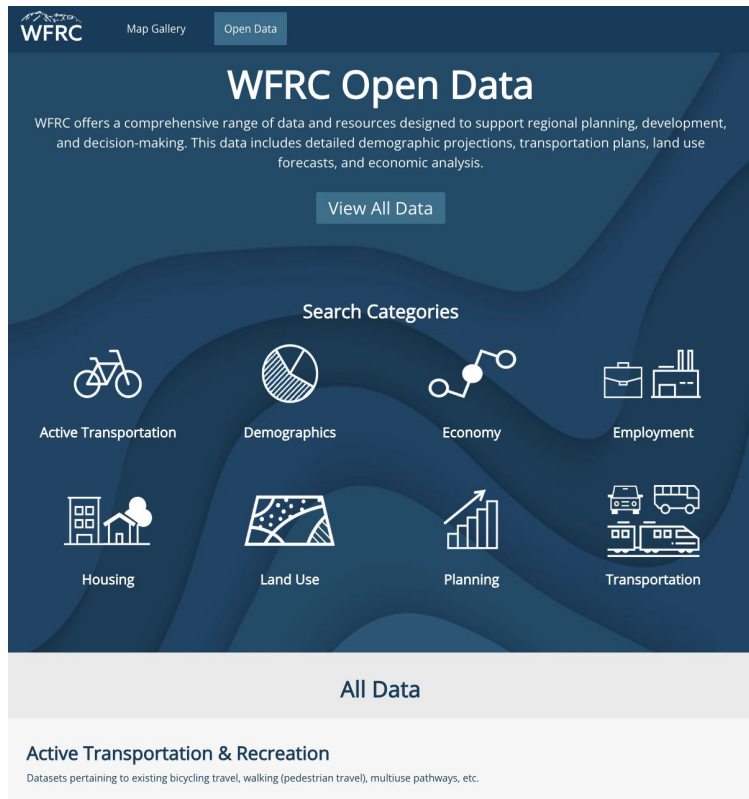


3. Workplace Access To Opportunities (ATO)



2.

data.wfrc.org



WFRC Open Data

WFRC offers a comprehensive range of data and resources designed to support regional planning, development, and decision-making. This data includes detailed demographic projections, transportation plans, land use forecasts, and economic analysis.

[View All Data](#)

Search Categories

- Active Transportation
- Demographics
- Economy
- Employment
- Housing
- Land Use
- Planning
- Transportation

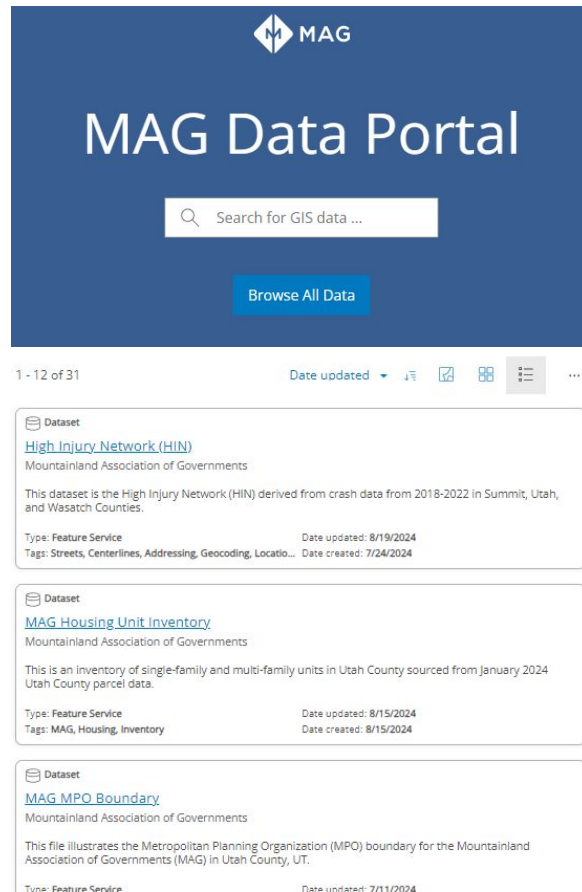
All Data

Active Transportation & Recreation

Datasets pertaining to existing bicycling travel, walking (pedestrian travel), multiuse pathways, etc.

Last Update	Dataset	Service URL	Info/Downloads
Dec 2022	Bike Network Quality: Level of Traffic Stress	Link	Download
July 2020	Bike/Ped Potential Demand (Road Centerlines)	Link	Download

data.magutah.gov



MAG Data Portal

[Search for GIS data ...](#)

[Browse All Data](#)

1 - 12 of 31

Date updated: [▼](#) [🔍](#) [📄](#) [📊](#) [☰](#) [⋮](#)

Dataset

[High Injury Network \(HIN\)](#)

Mountainland Association of Governments

This dataset is the High Injury Network (HIN) derived from crash data from 2018-2022 in Summit, Utah, and Wasatch Counties.

Type: Feature Service Date updated: 8/19/2024
Tags: Streets, Centerlines, Addressing, Geocoding, Location... Date created: 7/24/2024

Dataset

[MAG Housing Unit Inventory](#)

Mountainland Association of Governments

This is an inventory of single-family and multi-family units in Utah County sourced from January 2024 Utah County parcel data.

Type: Feature Service Date updated: 8/15/2024
Tags: MAG, Housing, Inventory Date created: 8/15/2024

Dataset

[MAG MPO Boundary](#)

Mountainland Association of Governments

This file illustrates the Metropolitan Planning Organization (MPO) boundary for the Mountainland Association of Governments (MAG) in Utah County, UT.

Type: Feature Service Date updated: 7/11/2024

1.

maps.wfrc.org

WFRC Map Gallery Open Data

WFRC Map Gallery

The WFRC Map Gallery provides an overview and links to GIS-based interactive map applications that relate to transportation and land use planning along Utah's Wasatch Front. Many of the maps in this gallery have been featured in our [Maps of the Month](#) series.

Featured Content

- Housing Unit Inventory Explorer
- Station Area Plans
- Traffic Volume Map (2024)
- Great Streets

Plans and Programs

- Wasatch Choice Interactive Map
- Adopted 2023-2050 RTP Projects
- Transportation Improvement Program (TIP)
- Transportation and Land Use Connection (TLC) Projects

All Maps and Tools

- Access to Opportunities
- Active Transportation Data Resources
- Annual Taxable Sales Trends for Utah Cities
- Beehive Bikeways
- Bike Safety
- City-Level Sales Tax Trends During COVID

magutah.gov/maps

MAG Mapping Center

Transportation Planning

- About the MAG MPO
- Congestion Management Plan
- Corridor Preservation
- MAG Boundaries
- RTP Projects Map
- Station Area Planning Map
- TIP Projects Map
- Wasatch Back RPO Plan

Transportation Data & Resources

- Community Profiles
- Legislative Districts Map (2024)
- MAG Proposed Safety Projects
- MAG RTP Projects History
- MAG Safe Streets Dashboard
- SE Forecast Viewer
- Traffic & Transit Counts
- UDOT Functional Classification

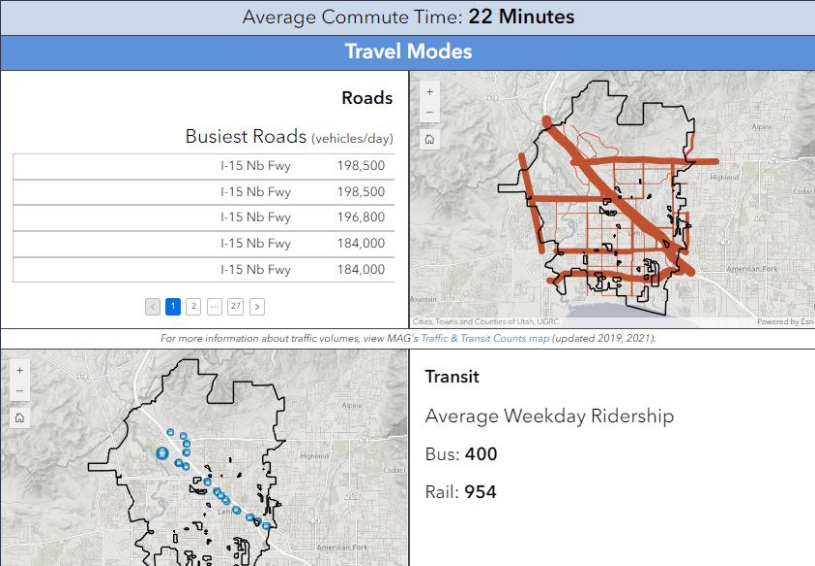
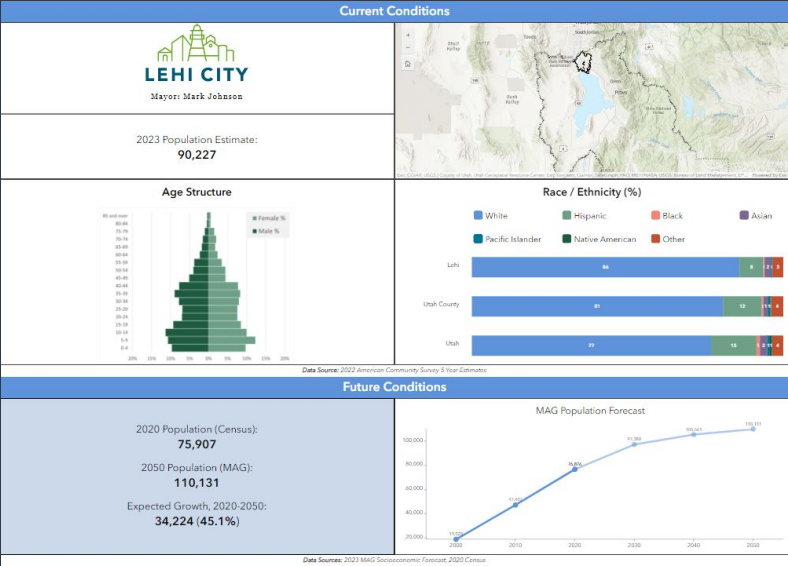
Honorable Mentions

A dark blue diagonal gradient bar that starts from the bottom left and extends towards the top right, covering the lower half of the slide.

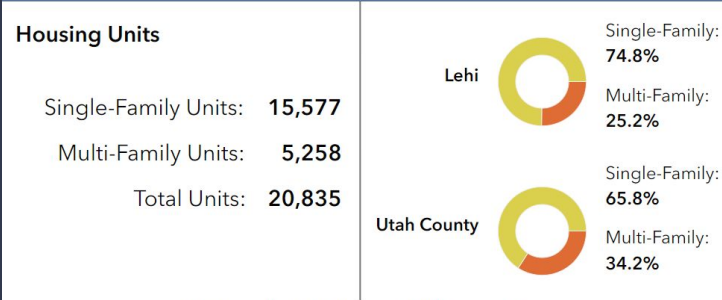
Honorable Mentions – UGRC's State GIS data source



Honorable Mentions – MAG Community Profiles

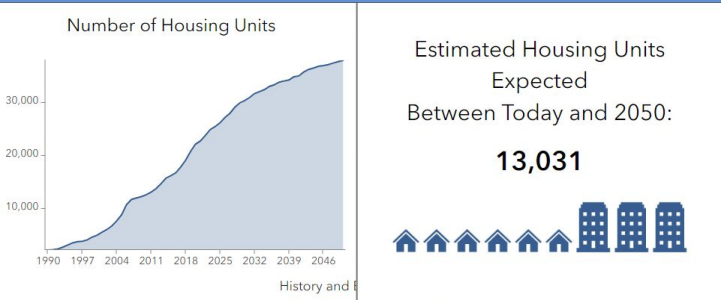


Current Housing Distribution



Data Source: 2019 MAG land use model (REMM) base year data

Future Housing Needs



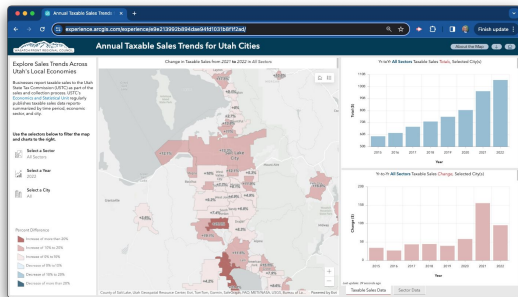
Data Source: 2019 MAG land use model (REMM) base year data

	Med. Income
Lehi	\$117,243
Utah County	\$91,263
Utah	\$86,833

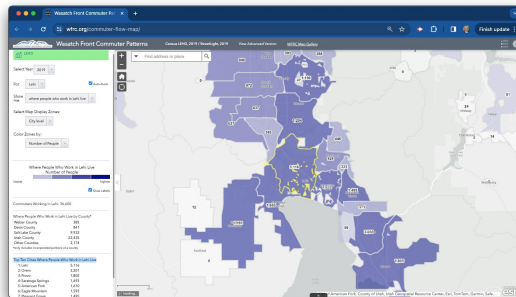
	Poverty
Lehi	3.6%
Utah County	5.9%
Utah	8.5%

Honorable Mentions – WFRC Map of the Month Series

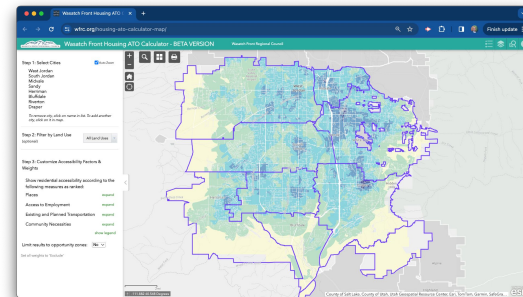
Taxable Sales, By City



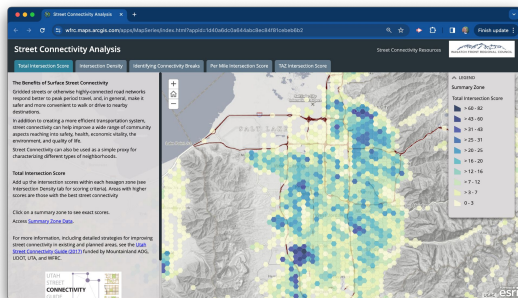
City-to-City Commuter Flows



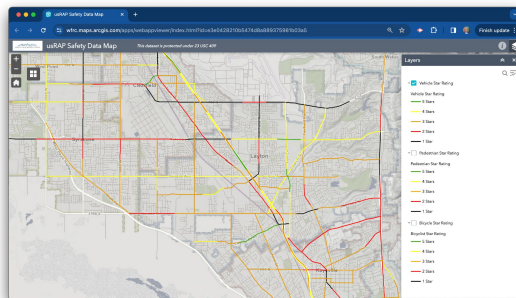
Housing Accessibility Calculator



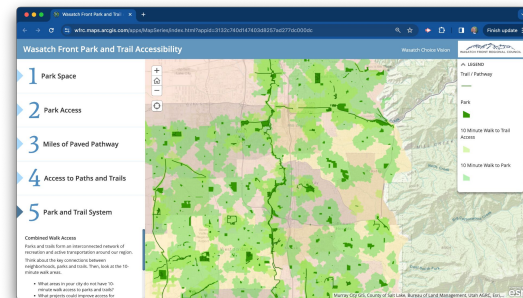
Street Network Connectivity



usRAP Roadway Safety

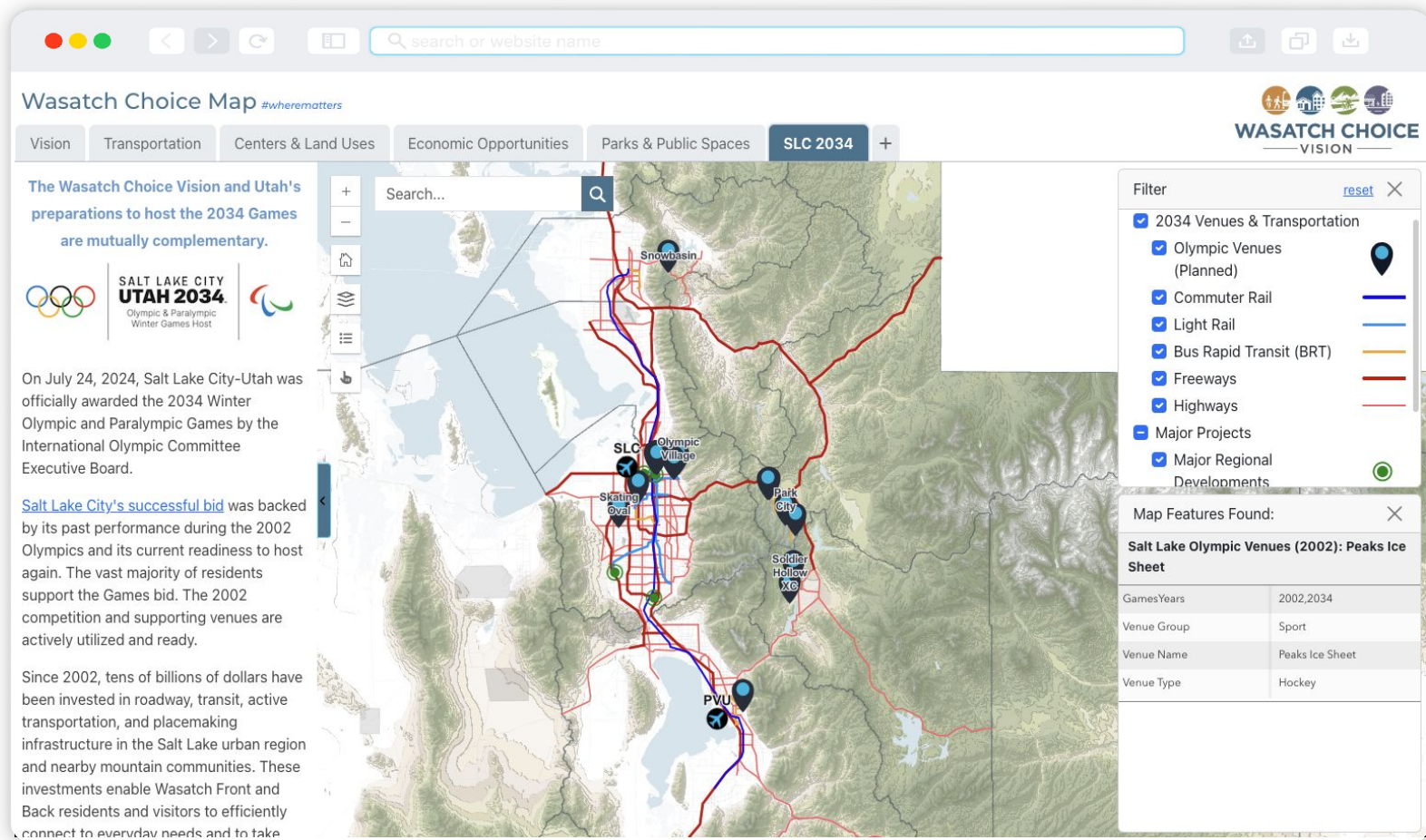


Park and Trail Access

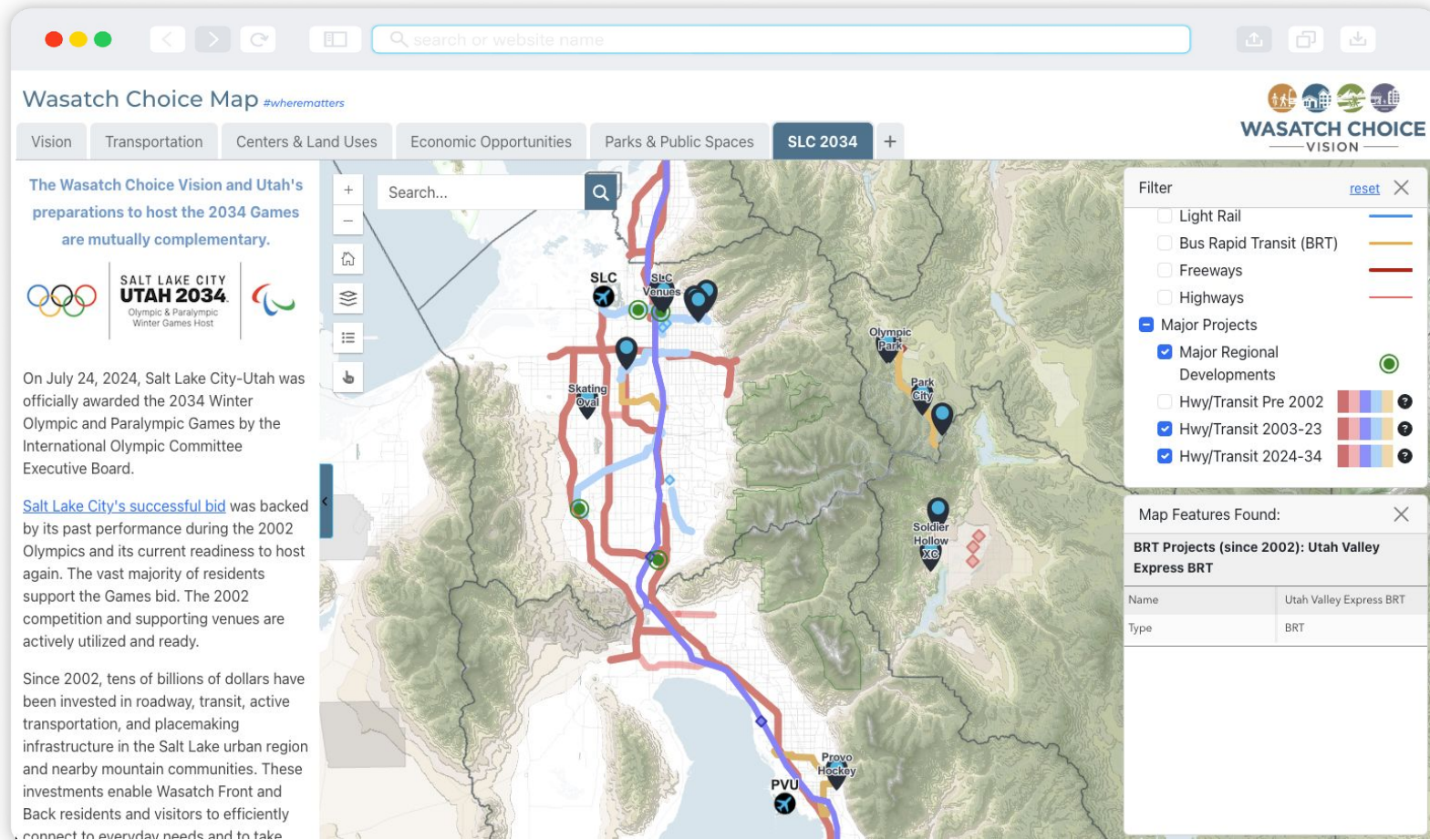


examples:

Honorable Mentions – Wasatch Choice Map, SLC 2034 'tab'



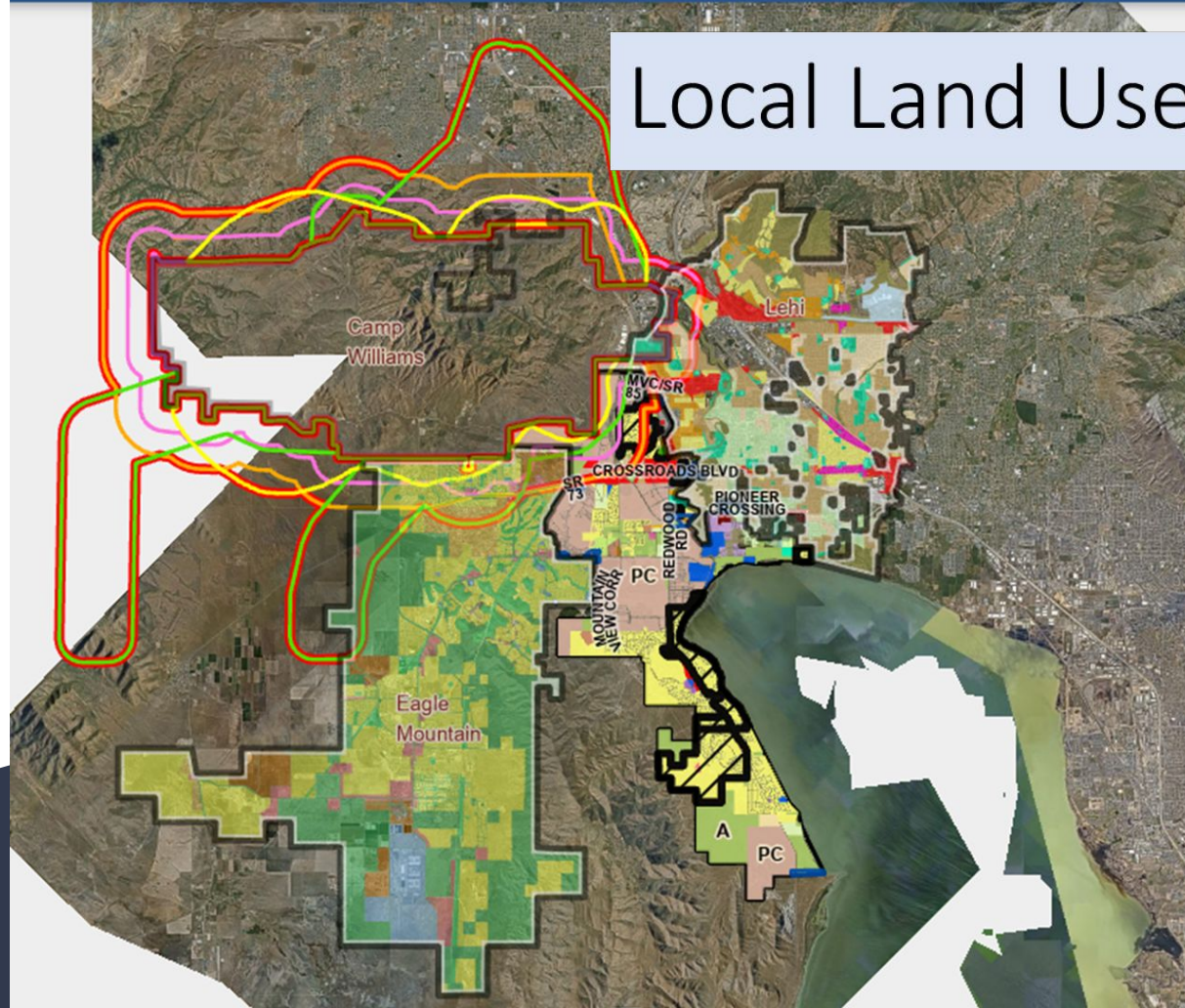
Honorable Mentions – Wasatch Choice Map, SLC 2034 'tab'



Saratoga Springs

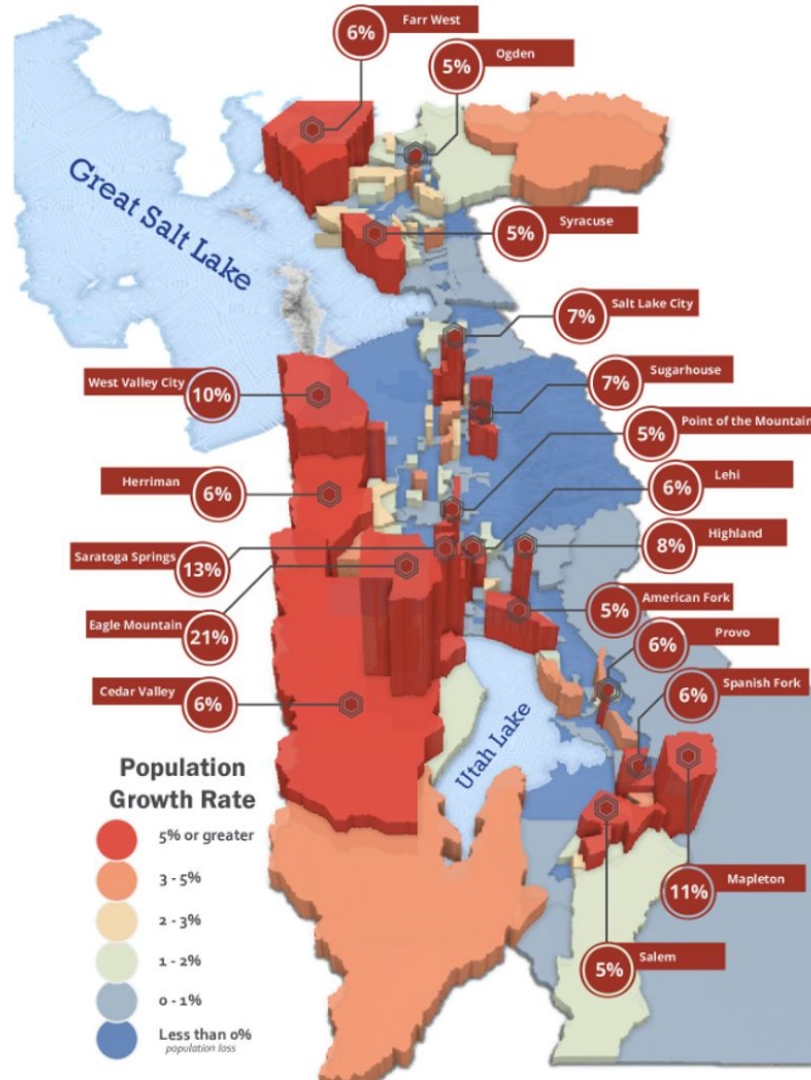


Local Land Use Maps



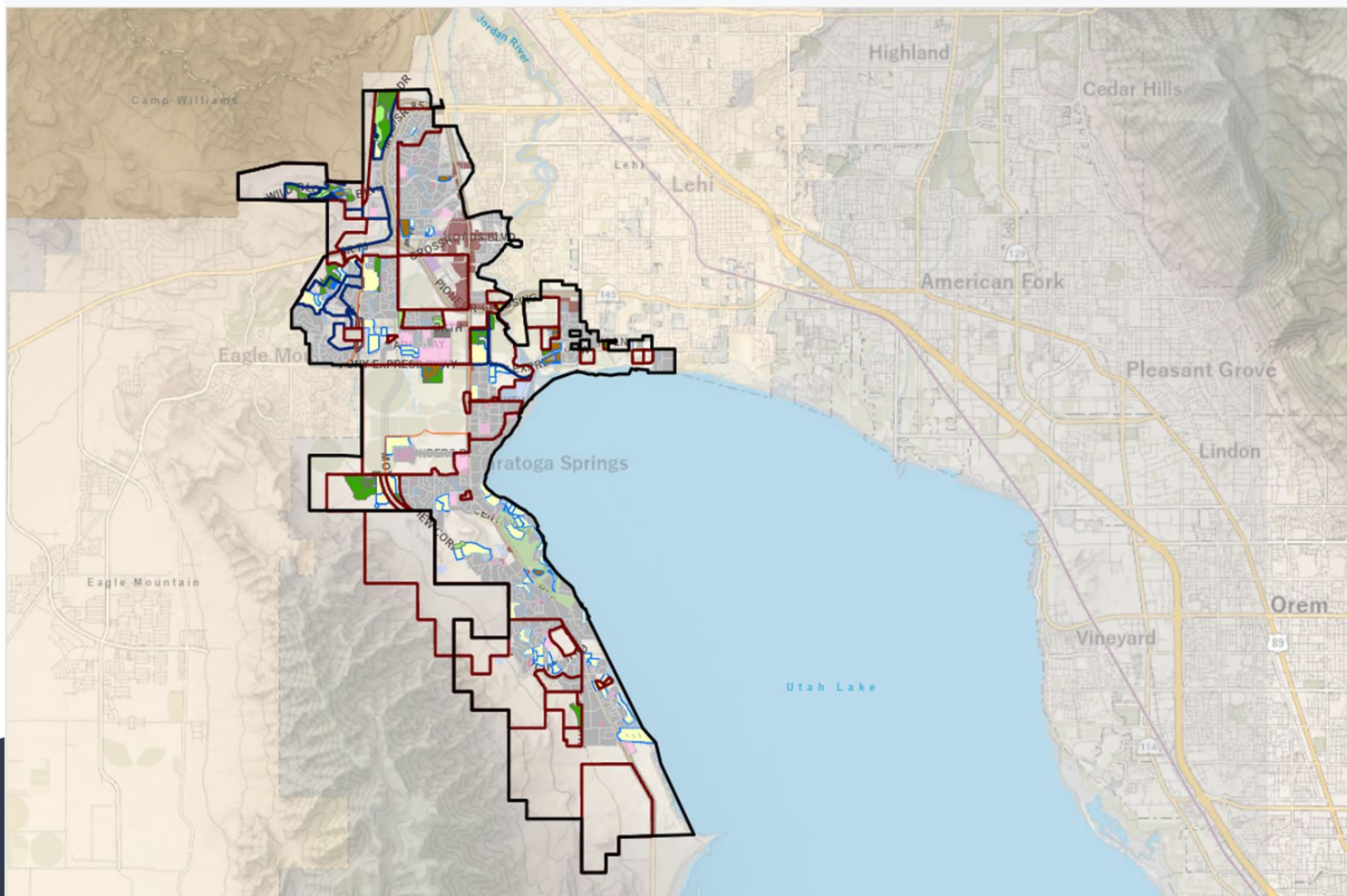
Saratoga Springs

“The mean population center or “belly button” of Utah today is in Saratoga Springs, just west of Utah Lake in Utah County...Today, Utah’s population center is in the Harvest Hills area of Saratoga Springs.” Natalie Gochnour





Planning Department Workload/Development



Entitled/Planned Units Remaining

18,762

Community Plan Units In Review

3,638

Village Plan Units In Review

2,488

Prelim Plat Review Units

247

Final Plat Review Units

1,110

Multi Family Units Available

569

Single Family Lots Available

455

MF Units Under Construction

SF Lots Under Construction

324 330

Residential Units Built

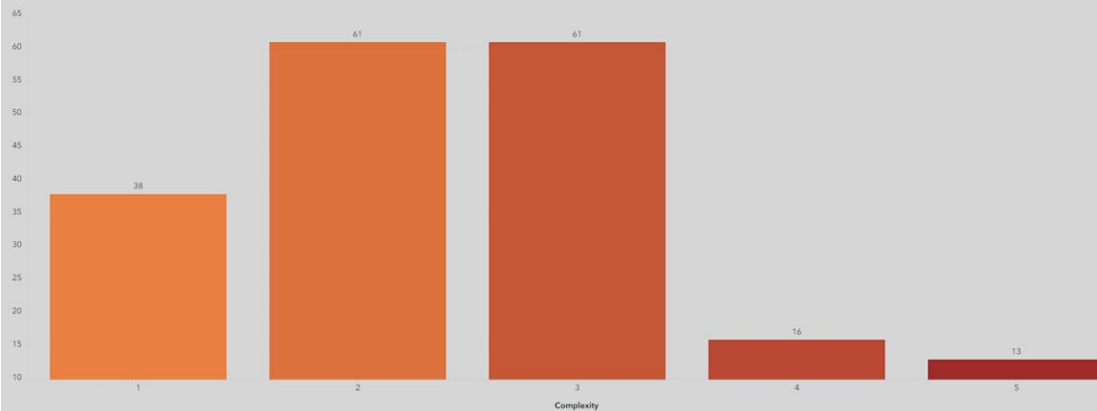
15,412

Estimated Pop.

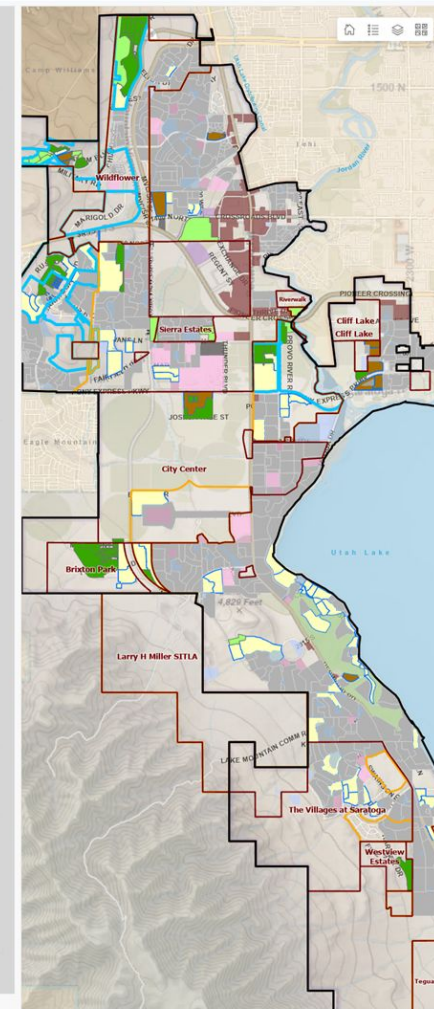
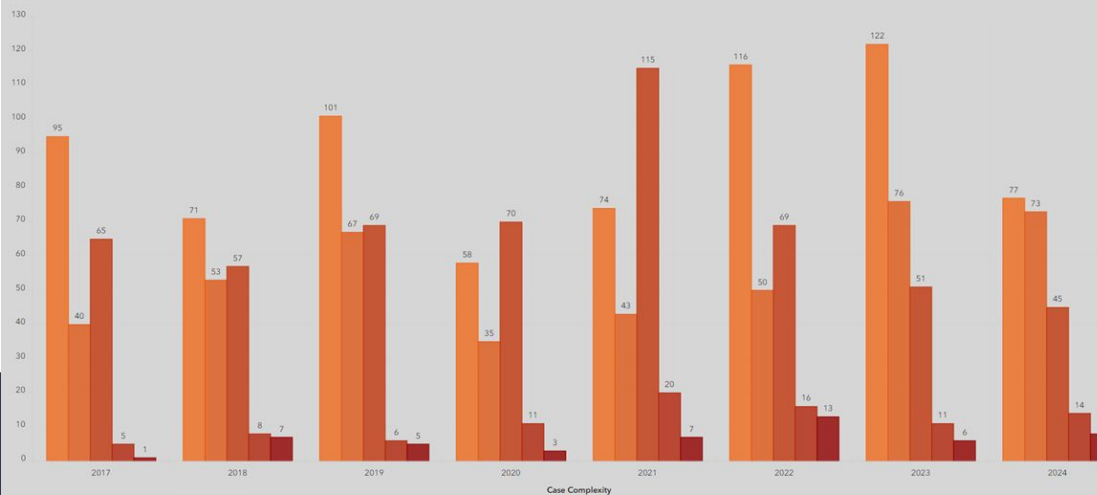
64,114

*4.16 average household size

Open Case Complexity



2017 Case Complexity to Present



Entitled/Planned Units Remaining

18,762

Community Plan Units In Review

3,638

Village Plan Units In Review

2,488

Prelim Plat Review Units

247

Final Plat Review Units

1,110

Multi Family Units Available

569

Single Family Lots Available

455

MF Units Under Construction

324

SF Lots Under Construction

330

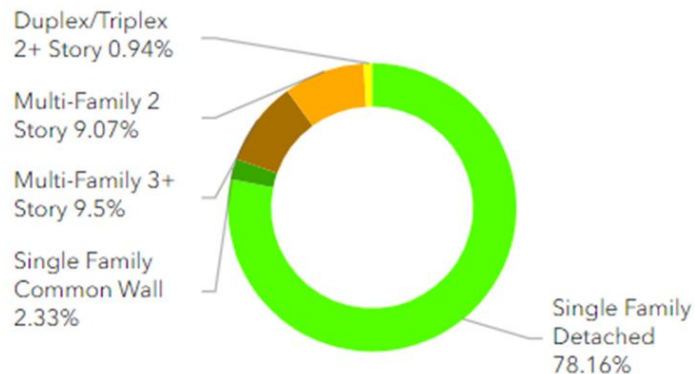
Residential Units Built

15,412

Estimated Pop.

64,114

Prop 6: Property Status When Passed (11/19/13)



Single Family Detached	5.2k
Single Family Common Wall	156
Multi-Family 3+ Story	636
Multi-Family 2 Story	607
Duplex/Triplex 2+ Story	63

Legend

- Multi-Family 1 Story
- Multi-Family 2 Story
- Multi-Family 3+ Story
- Duplex/Triplex 2+ Story

Unit - Built

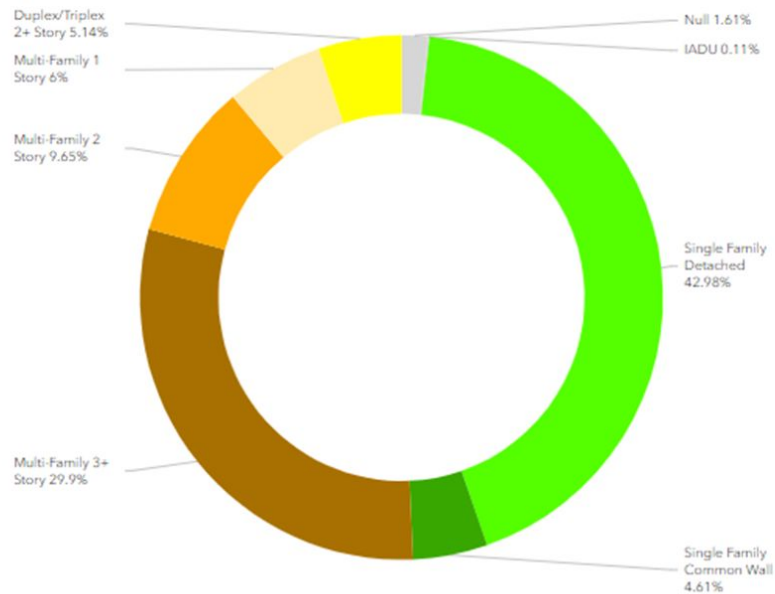
- Single Family Detached: 73% max
- Single Family Common Wall: 11% max
- Multi-Family 1 Story: 7% max
- Multi-Family 2 Story: 11% max
- Multi-Family 3+ Story: 2% max
- Duplex/Triplex 2+ Story: no prop 6 limit

MDA - Vested

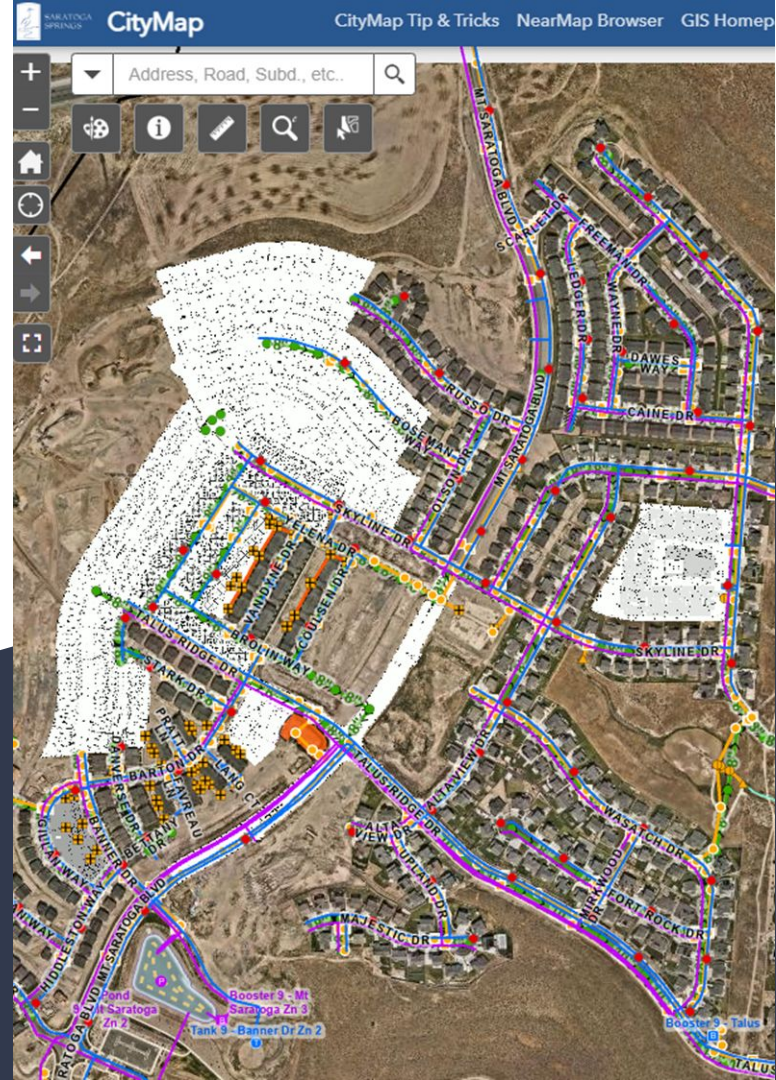
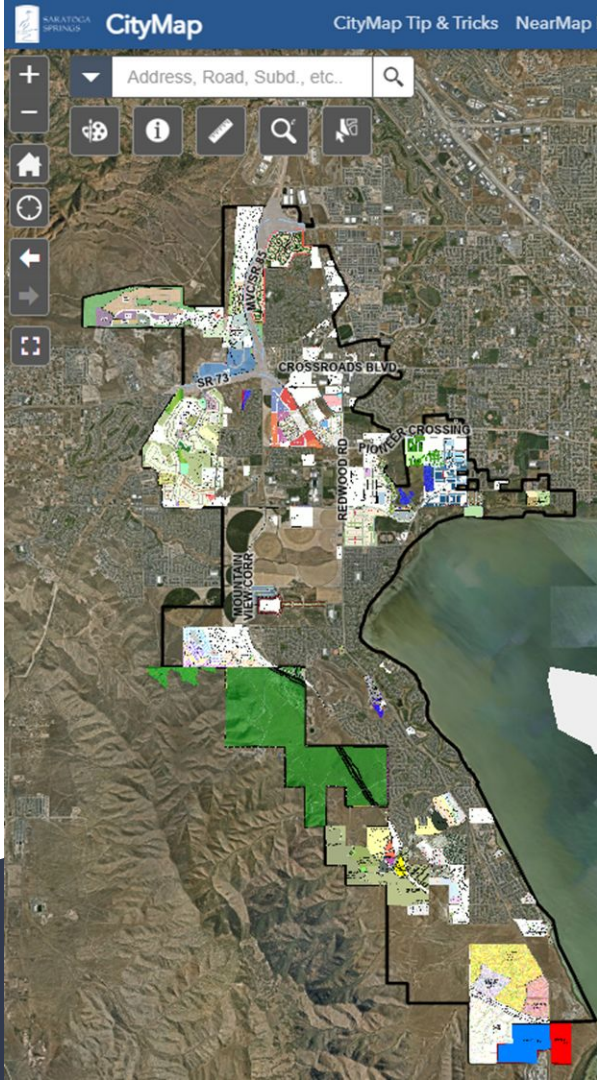
When Prop 6 Passed (11/19/13)

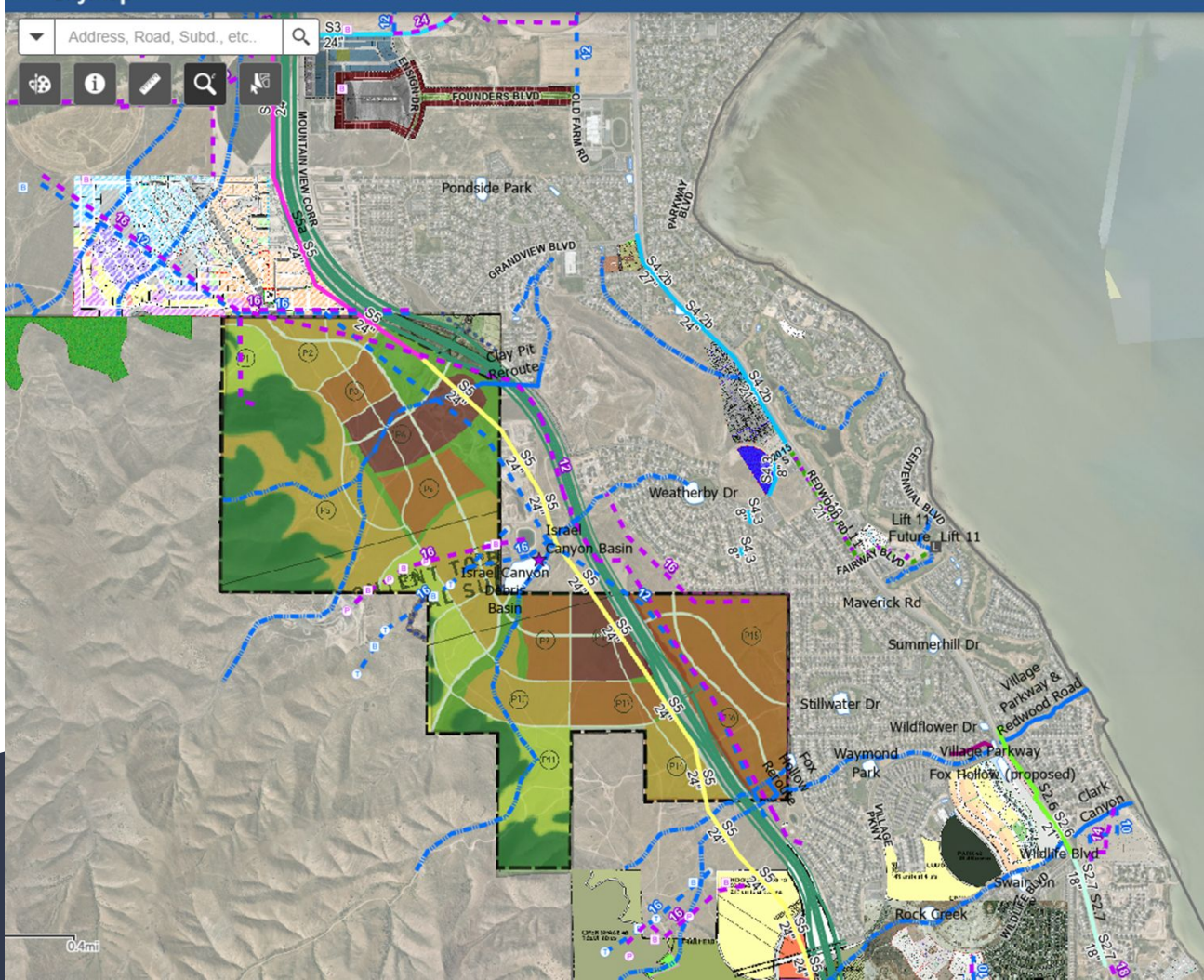


Prop 6: Recorded, Vacant Lots/Units



Null	15
IADU	1
Single Family Detached	401
Single Family Common Wall	43
Multi-Family 3+ Story	279
Multi-Family 2 Story	90
Multi-Family 1 Story	56
Duplex/Triplex 2+ Story	48





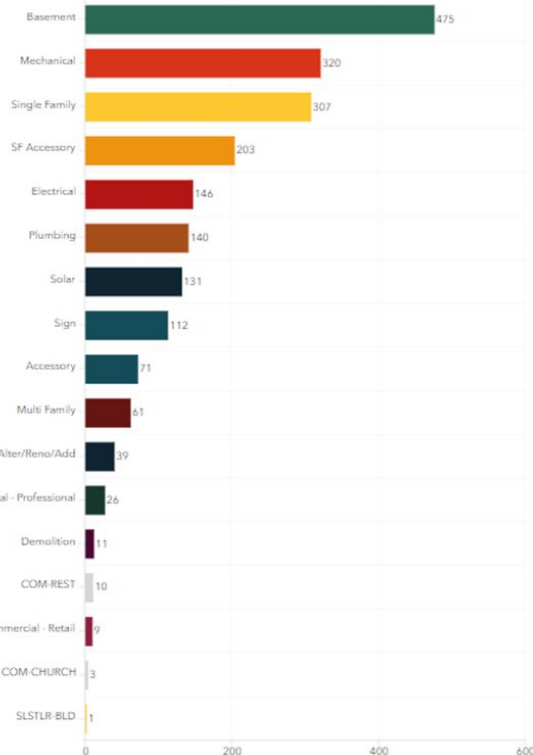
Active Applications/Permits

2,357

Permits Issued

2,065

Issued Building Permits By Type

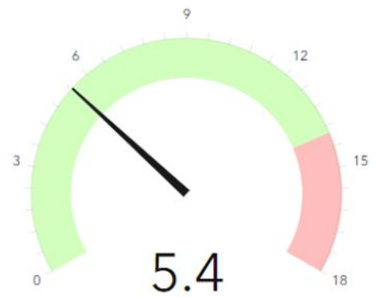


Active Permits By Type

Issued Building Permits

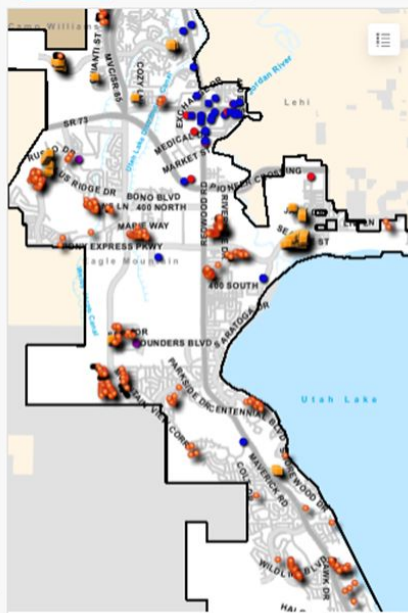
Average Review Time by Type

Plan Review Average (days)

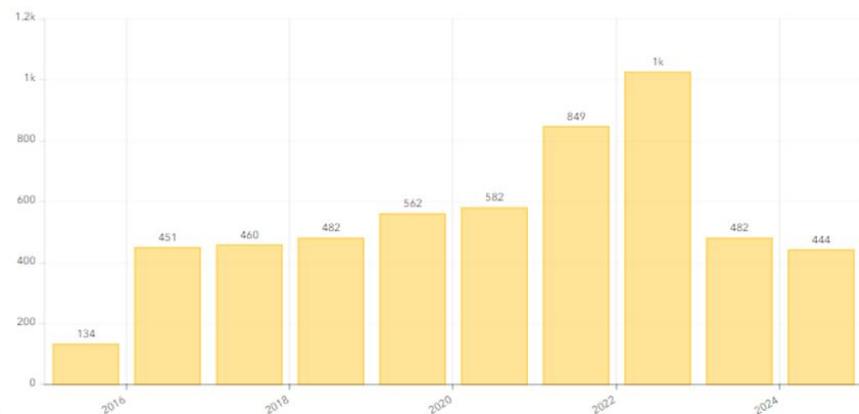


Average

90 Day Average



Yearly New Single-Family Construction

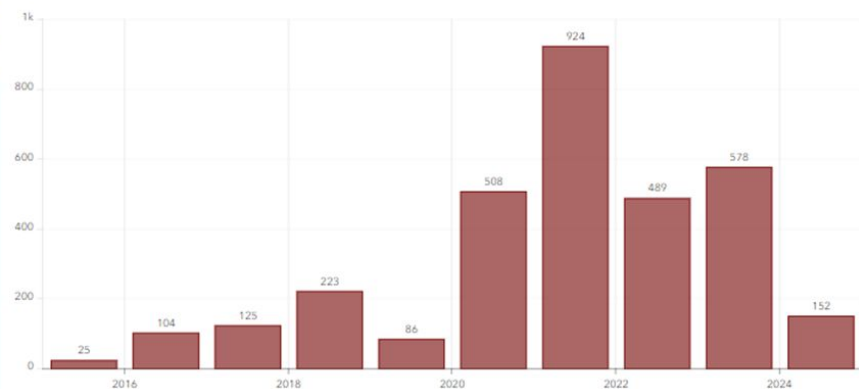


SFR By Month

SFR By Year

New Multi-Family Permit (C of O)

Doesn't represent number of units, only the number of permits



MFR by Year



Fairfield Town
Established in 1855 Incorporated in 2004

**Joint City Council Meeting
Eagle Mountain
January 30, 2024**

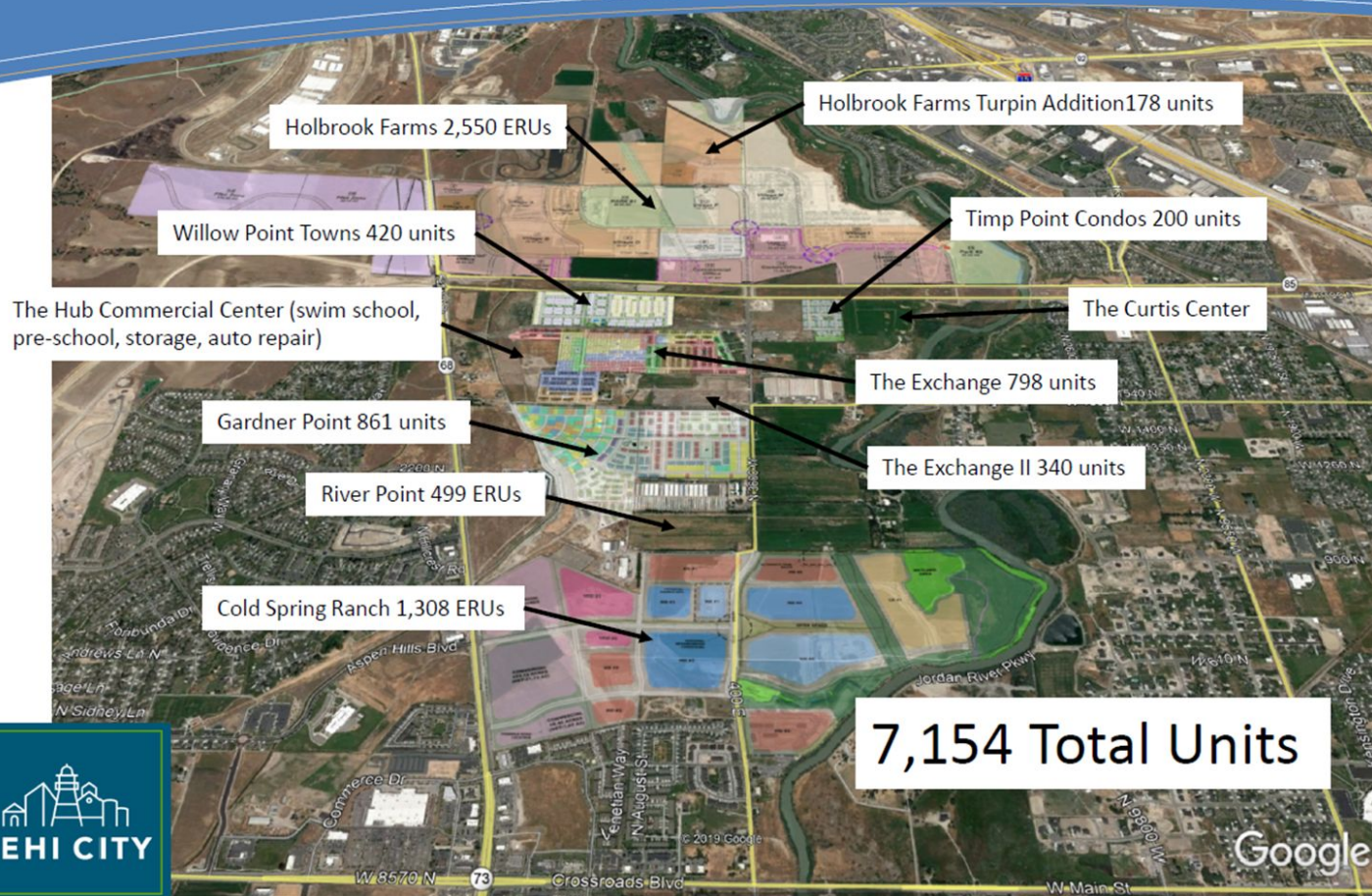


**Transit Plan
Lehi
May 29, 2024**

**North Utah County Road Projects
Saratoga Springs
July 30, 2024**

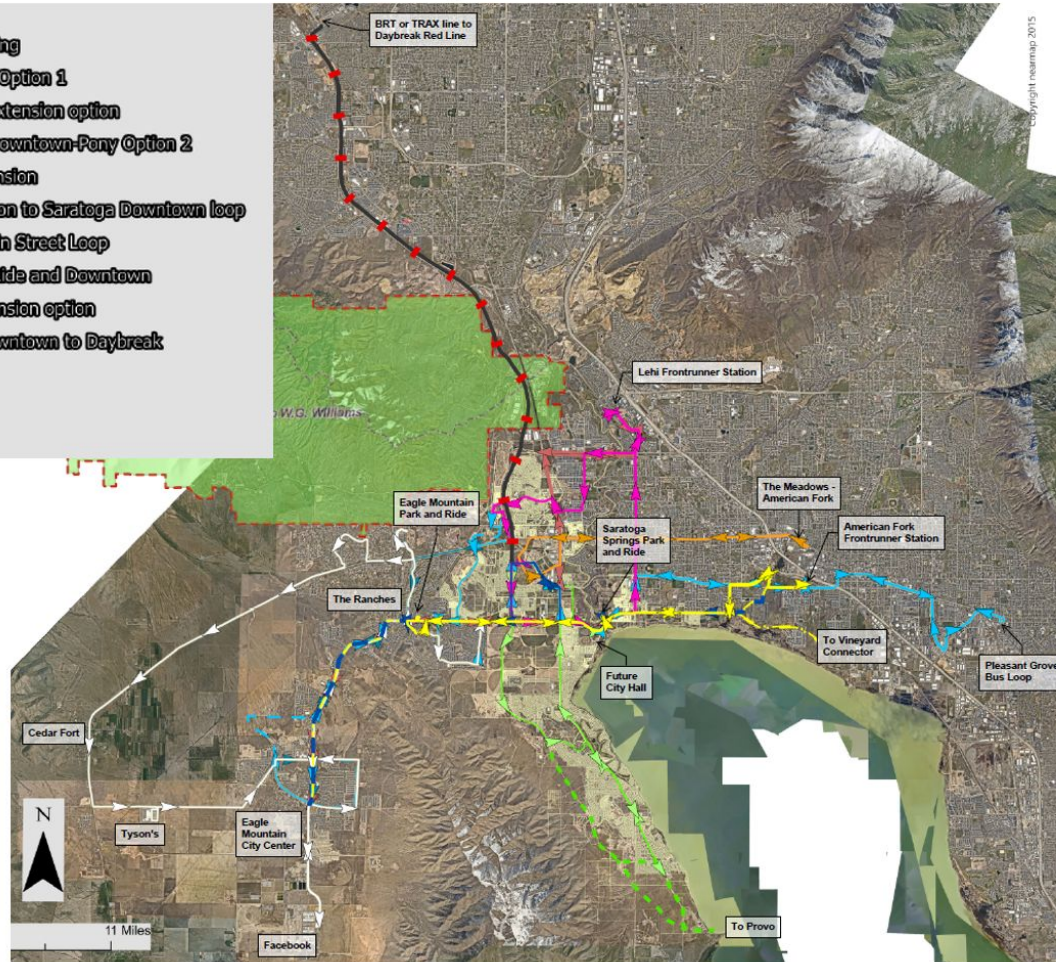


West Lehi Growth – November 2023



All Proposed Routes

- Route 809 Option 1
- Route 809 future routing
- BRT - AF Frontrunner Option 1
- BRT Option 1 future extension option
- AF-Frontrunner-BRT-Downtown-Pony Option 2
- AF-BRT Option 2 extension
- Lehi Frontrunner Station to Saratoga Downtown loop
- Downtown to Lehi Main Street Loop
- South City to Park-N-Ride and Downtown
- South City future extension option
- Future TRAX line - Downtown to Daybreak
- Route 689
- Route 809 Option 2
- Eagle Mountain Loop

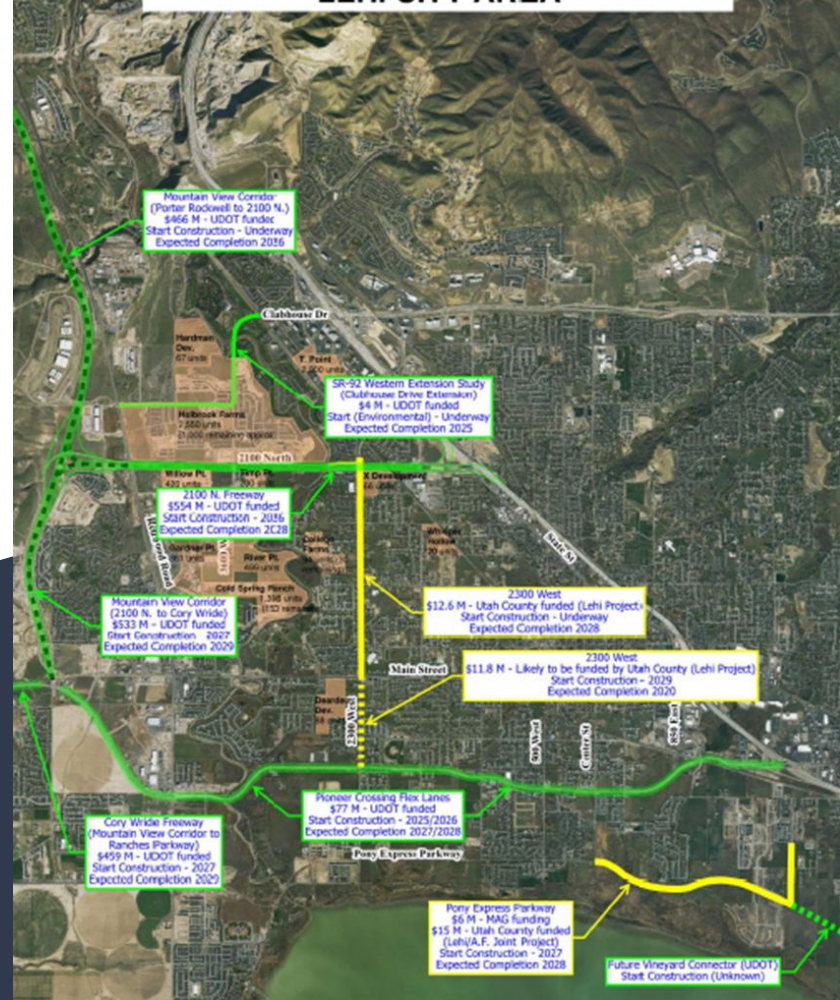


- Local route to be added in Lehi going from Texas Instruments, looping down to the Meadows area and tying into the future Trax/BRT line.
- Current SR-92 Commuter Lanes could be converted into dedicated BRT lanes and connect to FrontRunner.
- Future Trax line could be configured to go to Lehi FrontRunner Station.

LARGE NON-ROAD CAPITAL IMPROVEMENT PROJECTS LEHI CITY AREA



REGIONALLY SIGNIFICANT PROJECTS LEHI CITY AREA



Current Regional Transportation Projects



Southwest Area Visionary Roadway Network

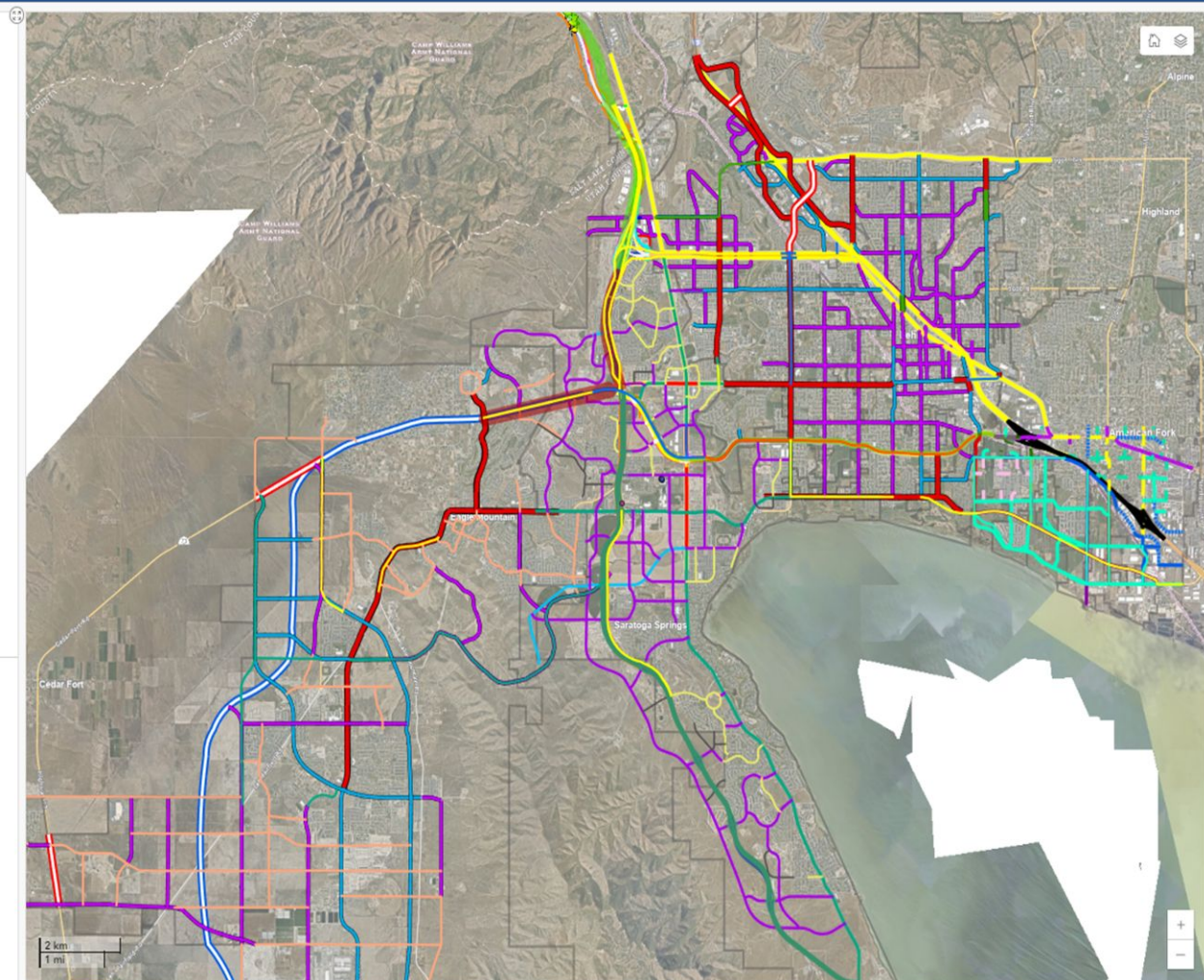


Vision Roadway Network		Transit Oriented Development	Intersections
— I-15	Principal Arterial (7 Lanes)	Business Core Loop (3 Lanes)	Roundabout
--- Legacy Principal Arterial (7 Lanes)	Arterial (5 Lanes)	Business Arterial (6 Lanes)	Signal
--- Legacy Arterial (5 Lanes)	Major Collector (4 Lanes)	Major Arterial (4 Lanes)	HAWK
--- Legacy Major Collector (4 Lanes)	Minor Collector (3 Lanes)	Core Collector (2 Lanes)	Intersection Improvement
--- Legacy Minor Collector (3 Lanes)	Vineyard Collector (JDOT Cleared Alignment)	Neighborhood Collector (2 Lanes)	Overpass

Transportation

- Current Regional Projects
- MAG Projects
 - Project Type
 - Capacity
 - Roadway
 - Transportation Solutions
- Lehi Street Project
- American Fork 5 yr TMP
- Eagle Mountain Street Projects
- UDOT Utah County Delivery Plan
 - Date
 - Spring 2024
 - Summer 2025
 - Winter 2025
 - Early 2029

Municipal Boundary



- MVC from 2100 N to Porter Rockwell
- SR-194; Lehi 2100 N Freeway
- Cory Wide Freeway; Ranches Pkwy to MVC
- Eagle Mountain Pony Express PKWY Phase 3
- MVC; Cory Wide to 2100 North
- Lehi 2300 West; 2100 N to Lehi Main St.
- Foothill Blvd Saratoga; Pony Exprs Pkwy to Lariat
- Pioneer Crossing Operational Improvements
- SR-194; 2100 N & 2300 Intersections
- SR-68; Raised Medians at Dalmore Dr.
- SR-145; Widening from SR-68 to MVC
- 2100 North & I-15 SB Off-Ramp Intersection Mod
- SR-73/Lehi Main St. Restripe
- Saratoga Rd and Pony Express Widening
- Pony Express Pkwy; Lehi Ctr. St to Vineyard Con.
- Eagle Mountain Airport RD; Pony Exp PKWY to SR-73
- Saratoga Sprgs 400 E Crossroads Bl 2 Grassland Dr

Transportation

Current Regional Projects

MAG Projects

Project Type

- Capacity
- Roadway
- Transportation Solutions

Lehi Street Project

American Fork 5 yr TMP

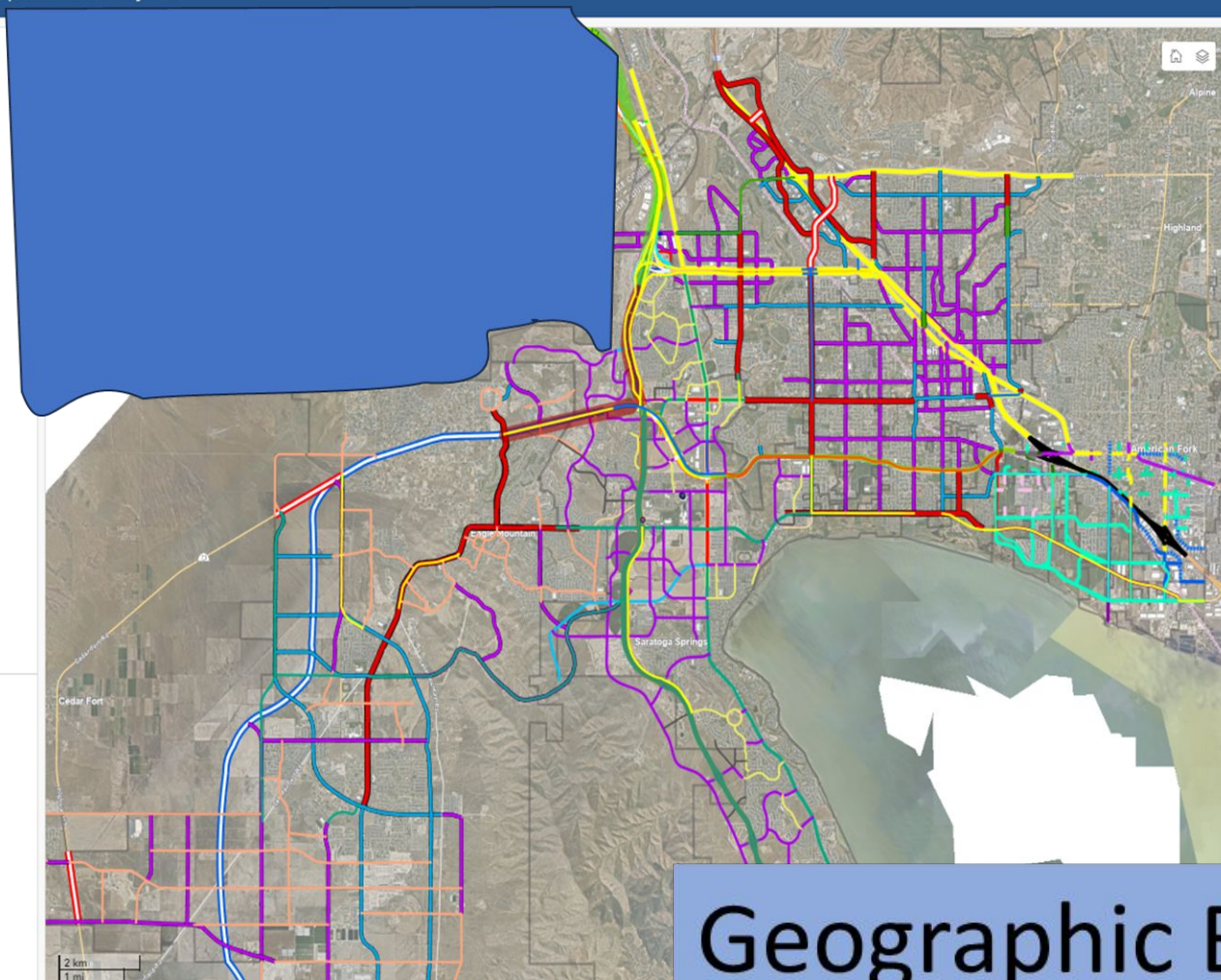
Eagle Mountain Street Projects

UDOT Utah County Delivery Plan

Date

- Spring 2024
- Summer 2025
- Winter 2025
- Early 2029

Municipal Boundary



- MVC from 2100 N to Porter Rockwell
- SR-194; Lehi 2100 N Freeway
- Cory Wride Freeway; Ranches Pkwy to MVC
- Eagle Mountain Pony Express PKWY Phase 3
- MVC; Cory Wride to 2100 North
- Lehi 2300 West; 2100 N to Lehi Main St.
- Foothill Blvd Saratoga; Pony Exprs Pkwy to Lariat
- Pioneer Crossing Operational Improvements
- SR-194; 2100 N & 2300 Intersections
- SR-68; Raised Medians at Dalmore Dr.
- SR-145; Widening from SR-68 to MVC
- 2100 North & I-15 SB Off-Ramp Intersection Mod
- SR-73/Lehi Main St. Restripe
- Saratoga Rd and Pony Express Widening
- Pony Express Pkwy; Lehi Ctr. St to Vineyard Con.
- Eagle Mountain Airport RD; Pony Exp PKWY to SR-73
- Saratoga Sprgs 400 E Crossroads Bl 2 Grassland Dr

Geographic Barriers

Transportation

Current Regional Projects

MAG Projects

Project Type

- Capacity
- Roadway
- Transportation Solutions

Lehi Street Project

-

American Fork 5 yr TMP

-

Eagle Mountain Street Projects

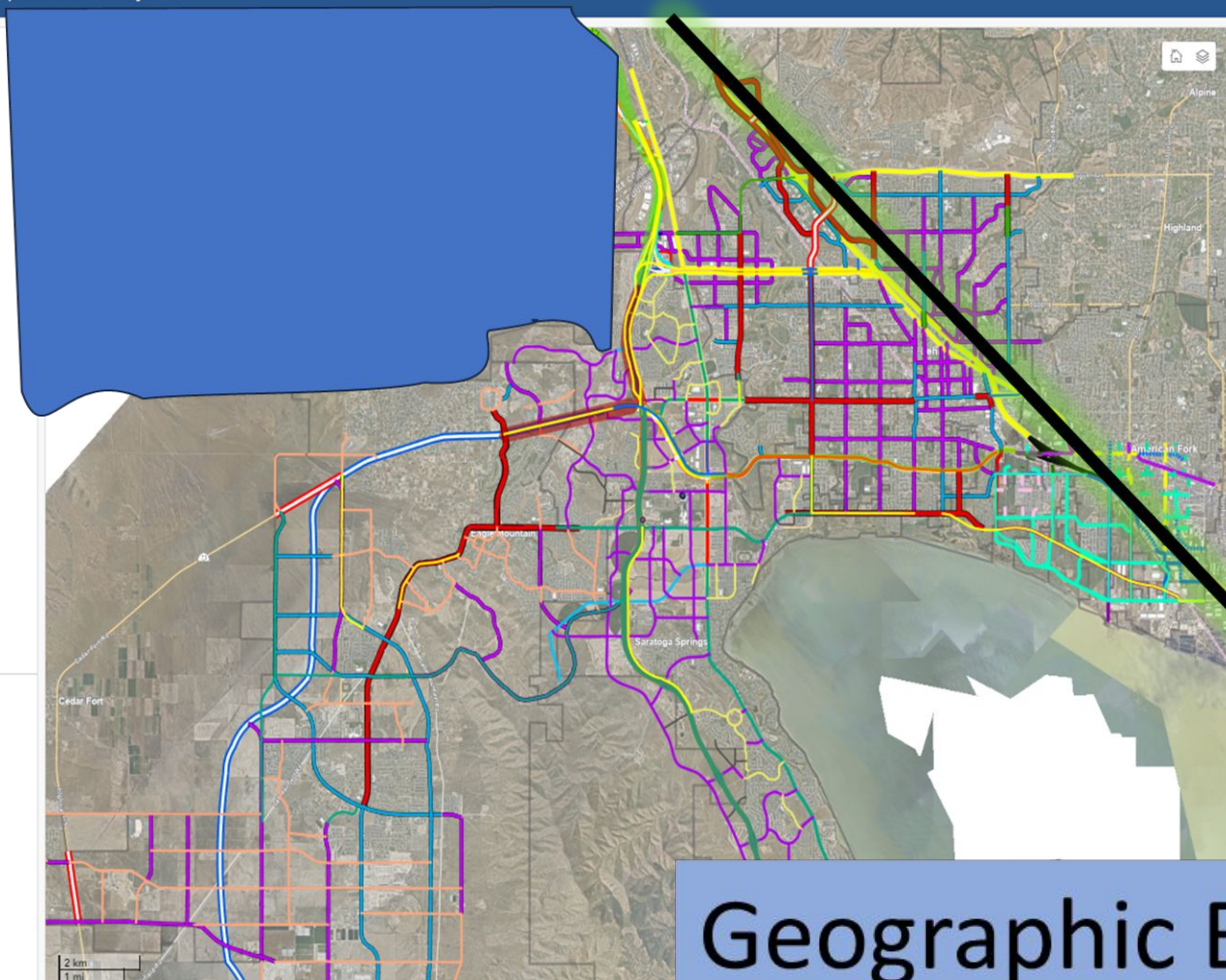
-

UDOT Utah County Delivery Plan

Date

- Spring 2024
- Summer 2025
- Winter 2025
- Early 2029

Municipal Boundary



- MVC from 2100 N to Porter Rockwell
- SR-194; Lehi 2100 N Freeway
- Cory Wride Freeway; Ranches Pkwy to MVC
- Eagle Mountain Pony Express PKWY Phase 3
- MVC; Cory Wride to 2100 North
- Lehi 2300 West; 2100 N to Lehi Main St.
- Foothill Blvd Saratoga; Pony Exprs Pkwy to Lariat
- Pioneer Crossing Operational Improvements
- SR-194; 2100 N & 2300 Intersections
- SR-68; Raised Medians at Dalmore Dr.
- SR-145; Widening from SR-68 to MVC
- 2100 North & I-15 SB Off-Ramp Intersection Mod
- SR-73/Lehi Main St. Restripe
- Saratoga Rd and Pony Express Widening
- Pony Express Pkwy; Lehi Ctr. St to Vineyard Con.
- Eagle Mountain Airport RD; Pony Exp PKWY to SR-73
- Saratoga Sprgs 400 E Crossroads Bl 2 Grassland Dr

Geographic Barriers

Transportation

Current Regional Projects

MAG Projects

Project Type

- Capacity
- Roadway
- Transportation Solutions

Lehi Street Project

-

American Fork 5 yr TMP

-

Eagle Mountain Street Projects

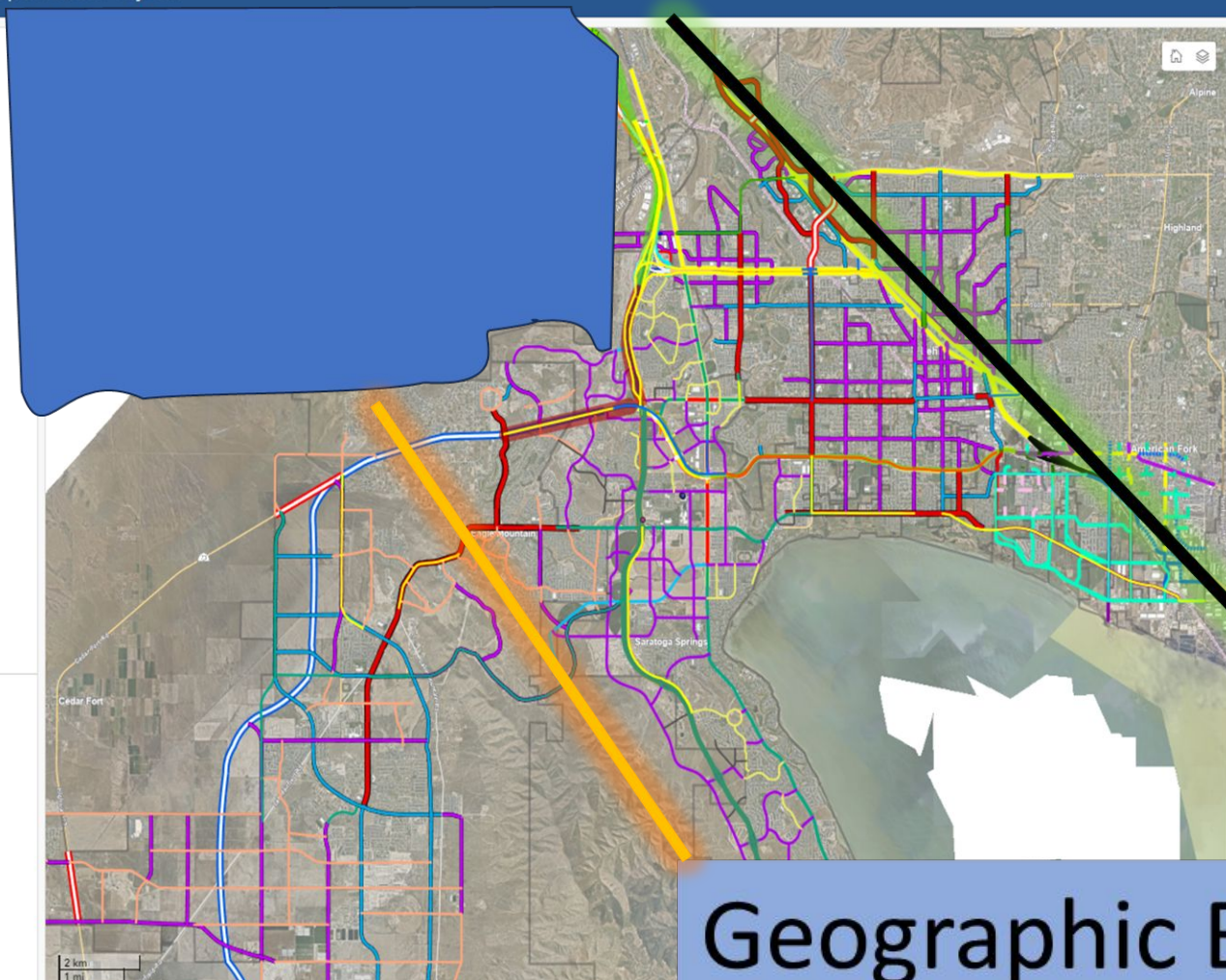
-

UDOT Utah County Delivery Plan

Date

- Spring 2024
- Summer 2025
- Winter 2025
- Early 2029

Municipal Boundary



- MVC from 2100 N to Porter Rockwell
- SR-194; Lehi 2100 N Freeway
- Cory Wride Freeway; Ranches Pkwy to MVC
- Eagle Mountain Pony Express PKWY Phase 3
- MVC; Cory Wride to 2100 North
- Lehi 2300 West; 2100 N to Lehi Main St.
- Foothill Blvd Saratoga; Pony Exprs Pkwy to Lariat
- Pioneer Crossing Operational Improvements
- SR-194; 2100 N & 2300 Intersections
- SR-68; Raised Medians at Dalmore Dr.
- SR-145; Widening from SR-68 to MVC
- 2100 North & I-15 SB Off-Ramp Intersection Mod
- SR-73/Lehi Main St. Restripe
- Saratoga Rd and Pony Express Widening
- Pony Express Pkwy; Lehi Ctr. St to Vineyard Con.
- Eagle Mountain Airport RD; Pony Exp PKWY to SR-73
- Saratoga Sprgs 400 E Crossroads Bl 2 Grassland Dr

Geographic Barriers

Transportation

Current Regional Projects

MAG Projects

Project Type

- Capacity
- Roadway
- Transportation Solutions

Lehi Street Project

-

American Fork 5 yr TMP

-

Eagle Mountain Street Projects

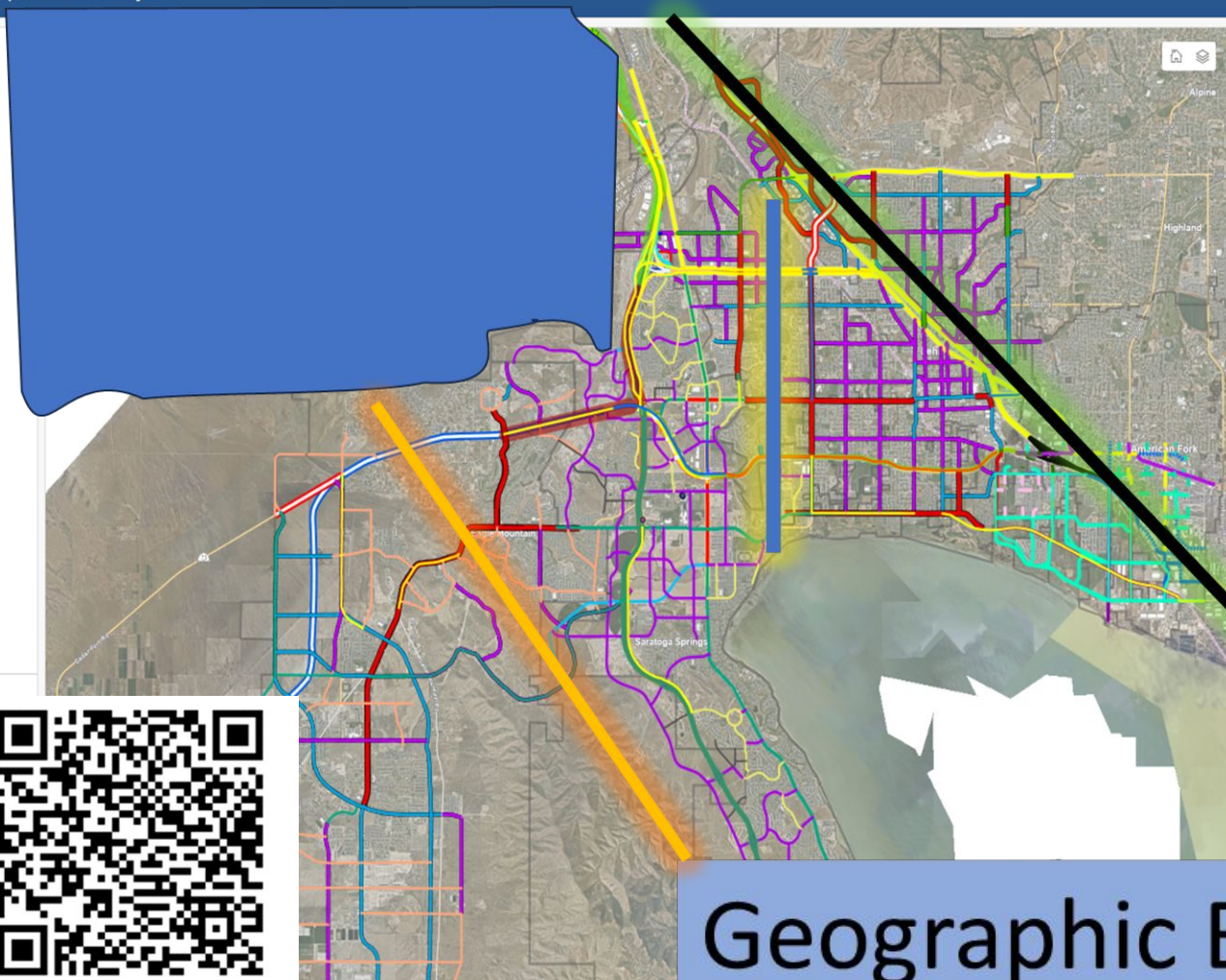
-

UDOT Utah County Delivery Plan

Date

- Spring 2024
- Summer 2025
- Winter 2025
- Early 2029

Municipal Boundary



- MVC from 2100 N to Porter Rockwell
- SR-194; Lehi 2100 N Freeway
- Cory Wride Freeway; Ranches Pkwy to MVC
- Eagle Mountain Pony Express PKWY Phase 3
- MVC; Cory Wride to 2100 North
- Lehi 2300 West; 2100 N to Lehi Main St.
- Foothill Blvd Saratoga; Pony Exprs Pkwy to Lariat
- Pioneer Crossing Operational Improvements
- SR-194; 2100 N & 2300 Intersections
- SR-68; Raised Medians at Dalmore Dr.
- SR-145; Widening from SR-68 to MVC
- 2100 North & I-15 SB Off-Ramp Intersection Mod
- SR-73/Lehi Main St. Restripe
- Saratoga Rd and Pony Express Widening
- Pony Express Pkwy; Lehi Ctr. St to Vineyard Con.
- Eagle Mountain Airport RD; Pony Exp PKWY to SR-73
- Saratoga Sprgs 400 E Crossroads Bl 2 Grassland Dr

Geographic Barriers



Pending Applications
Comment Form

Approved Master
Development Plans



Home > Government > Departments > Planning & Zoning > Applications Pending & Recently Approved

Applications Pending And Recently Approved

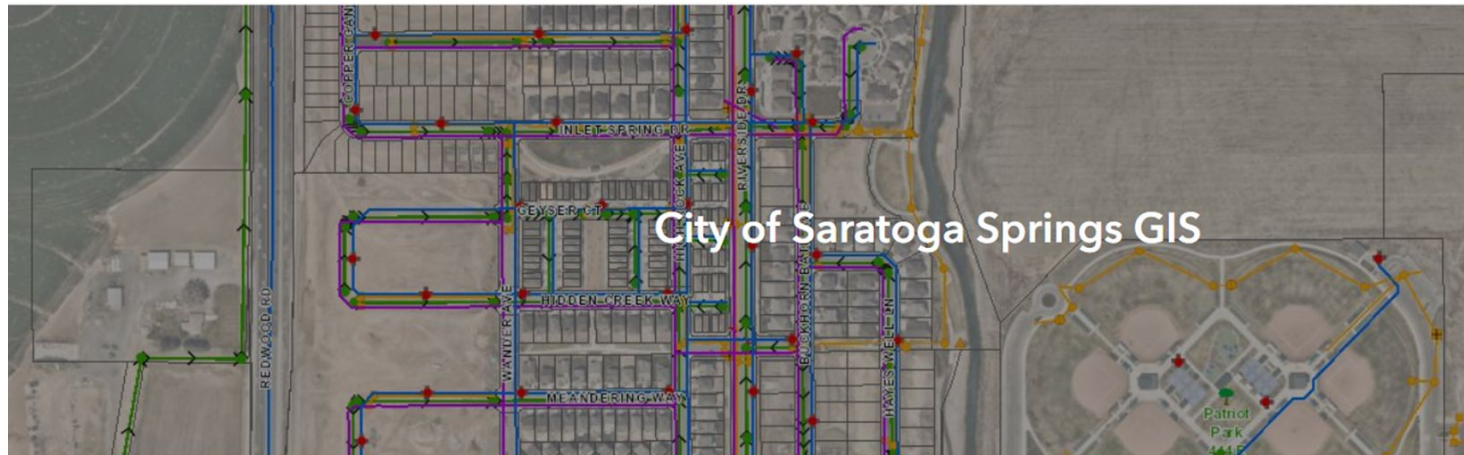
Approved Master Development Plans

[Click here](#) to access list of approved master development plans.

Pending Applications

Residential

- [Cliff Lake Neighborhood Plan, Planner: K. Page \(Updated August 2024\)](#)
- [IADU Map Amend: Arcadia Springs A & B, Planner: S.Stout \(updated May 2024\)](#)
- [IADU Map Amendment - Sierra Estates Plat E, Planner: S. Stout \(Updated February 2024\)](#)
- [IADU Map Amendment: Lake Mountain Estates J-3, Planner: Sam Stout \(Updated March 2024\)](#)
- [IADU Map Amendment: Saratoga Hills Phase 3, Planner: Sam Stout \(Updated March 2024\)](#)
- [Overlook at Mt Saratoga Village Plan 4, Planner: A. Roy \(Updated May 2024\)](#)
- [River View Plaza Townhomes Prelim Plat and Site Plan, Planner: D.](#)
- [Sierra Estates Phase 3-J Prelim & Site Plan, Planner: A.Roy \(updated June 2024\)](#)
- [Sierra Estates Phase 3-K Prelim & Site Plan, Planner: A.Roy \(updated 2024\)](#)
- [SITLA Larry H Miller Group Community Plan, Planner: T. Morlan \(Updated March 2024\)](#)
- [The Reserve on the Lake Preliminary Plat, Planner: G. Grandpre \(Updated Jan 2024\)](#)
- [Wander V3 K1 Site Plan ARC, Planner: K. Black \(Updated November 2023\)](#)
- [Wander V3 Major Amendment 2, Planner: G. Grandpre \(Updated July 2024\)](#)
- [Westview Estates Plat A Prelim and Final, Planner: D.Jellen/T.](#)



Active Projects



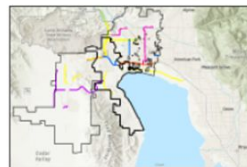
Building Permits Dashboard Pu...



City Addresses



City Utilities



Current Regional Transportation...



Fireworks Restriction Map



Housing Densities Dashboard ...



Internal Accessory Dwelling Un...